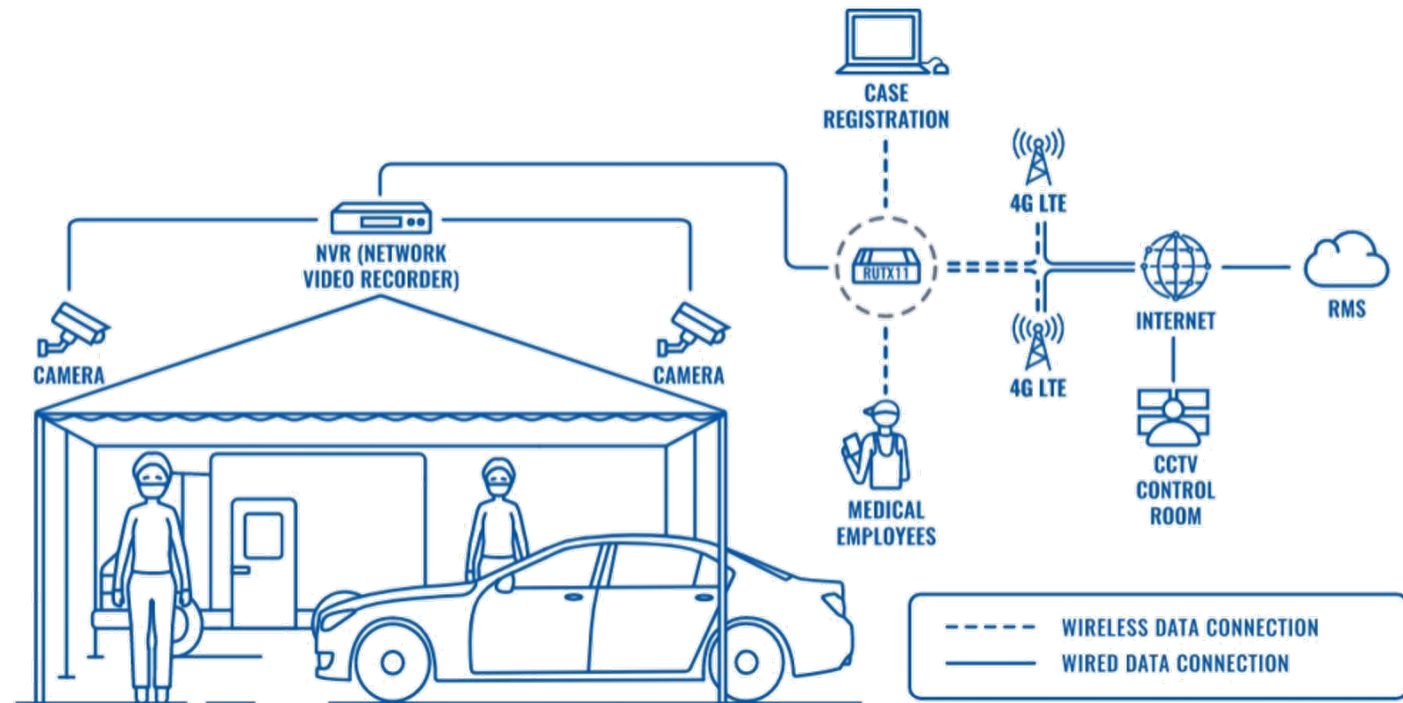


Intelligent In-Vehicle Solutions based on JHC SIGM Series

March 19th, 2021



Market Overview



JHC Products for Intelligent Transportation

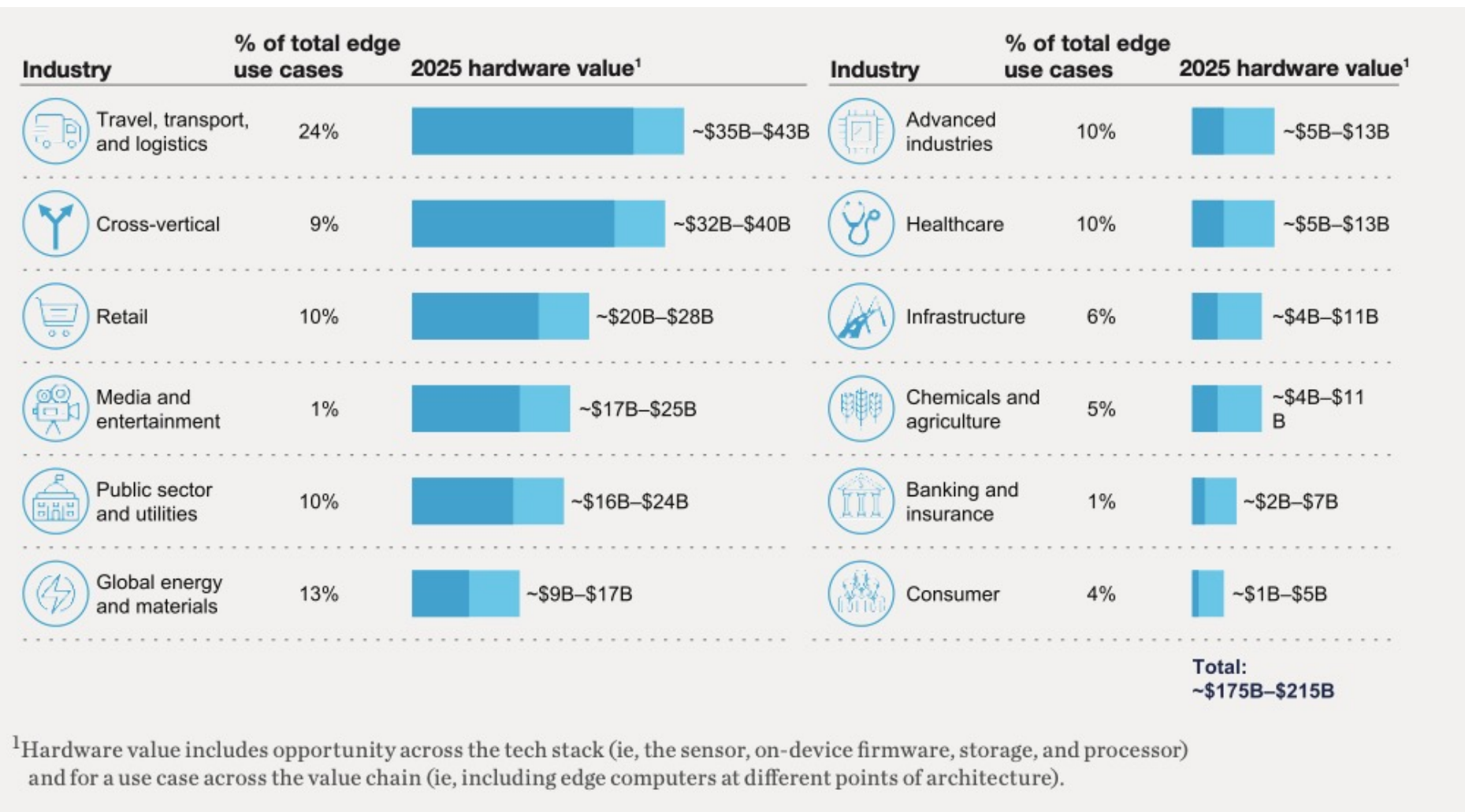


Applications & Case Scenarios

1

Market Trends & Industry Directions

Market Overview



Multi Access Edge Computing

- Video Analytics
- Data Monitoring
- xloX (AIoT; IIoT; IoV etc)
- Data Caching
- Advanced Analytics
- Location Services
- Optimized local content

Source: JM Chabas, Chandra Gnanasambandam, Sanchi Gupte, and Mitra Mahdavian | McKinsey & Company

Intelligent Vehicle

Detectors of Passenger Analytics

Датчики и контроллеры автоматизированной системы мониторинга пассажиропотока

ADs Monitors

Outside Information Panel

Oil consumption

Датчик уровня топлива ТД-500 «Эскорт»/ Omnicomm LLS 20160

Система видеонаблюдения:

- Видеорегистратор EMV-400/800/1200
- Видеокамеры MBK-0933:
 - переднего вида;
 - наблюдения за водителем
 - салонные (от 4 до 12 в зависимости от вида ТС)
 - заднего вида

Video Surveillance 4-12ch

Датчик задымления и повышения температуры ИПК-ТУ 212-114A3-10281

Gas/Fire Detectors

Video Surveillance Microphon

Микрофон системы видеонаблюдения

Alarm Button

Тревожная кнопка

Бортовой навигационно-связной терминал Гранит-навигатор-2.07

Бортовая навигационно-связная УКВ-радиостанция ТАКТ-201.23 П45

Radio Communication

3G-модем Telit 863-3GE

3G modem Industrial

Internal
Data Sensors

External Data
Sensors

Communication

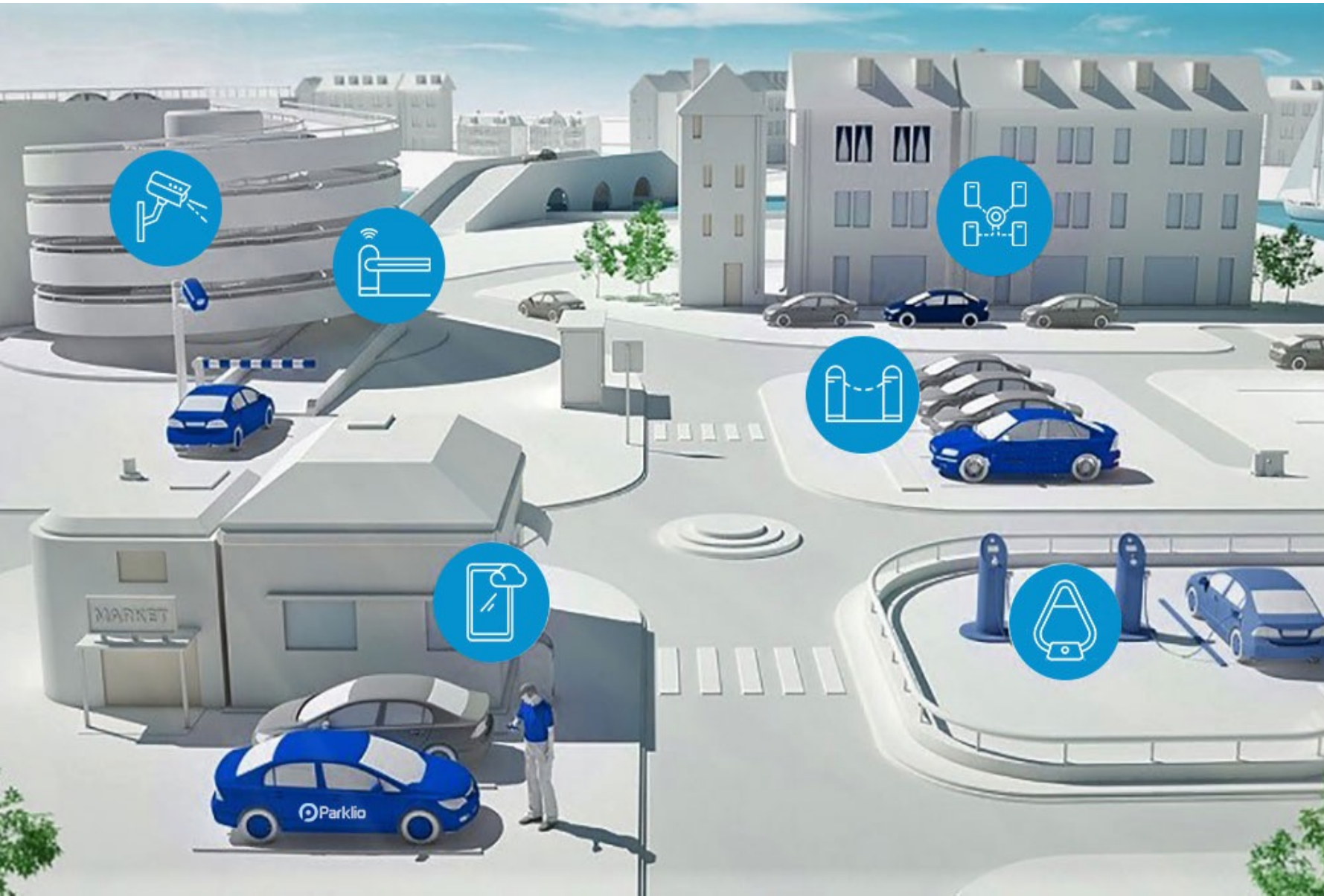
Data collection
& Processing

Data
Visualisation

JHCTECH

V2X = V2G - V2V - V2I - V2N - V2D

Intelligent Vehicle



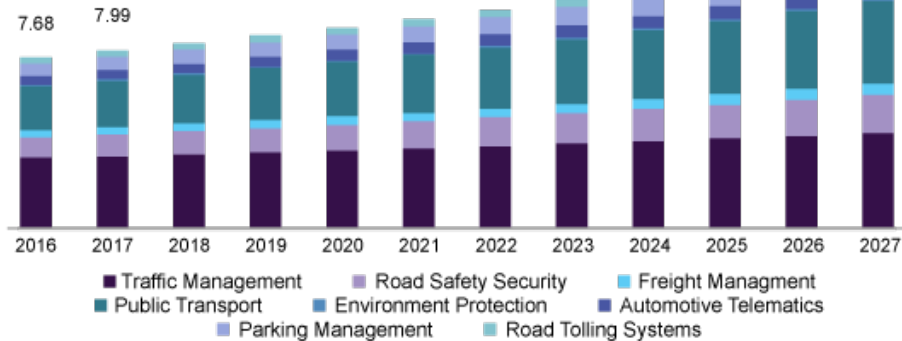
V2D – Vehicle to Device
V2V – Vehicle to Vehicle
V2P – Vehicle to Person
V2G – Vehicle to Grid
V2I – Vehicle to Infrastructure
V2N – Vehicle to Network

- Collect Data
- Compute Data
- Visualize Data

Image from Parklio.com
www.jhctechtechnology.cn

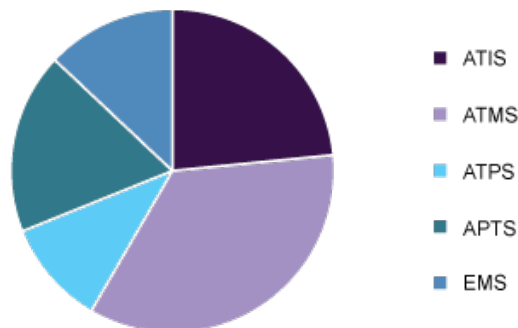
Intelligent Transportation Market Major Trends

U.S. intelligent transportation system market size, by application, 2016 - 2027 (USD Billion)

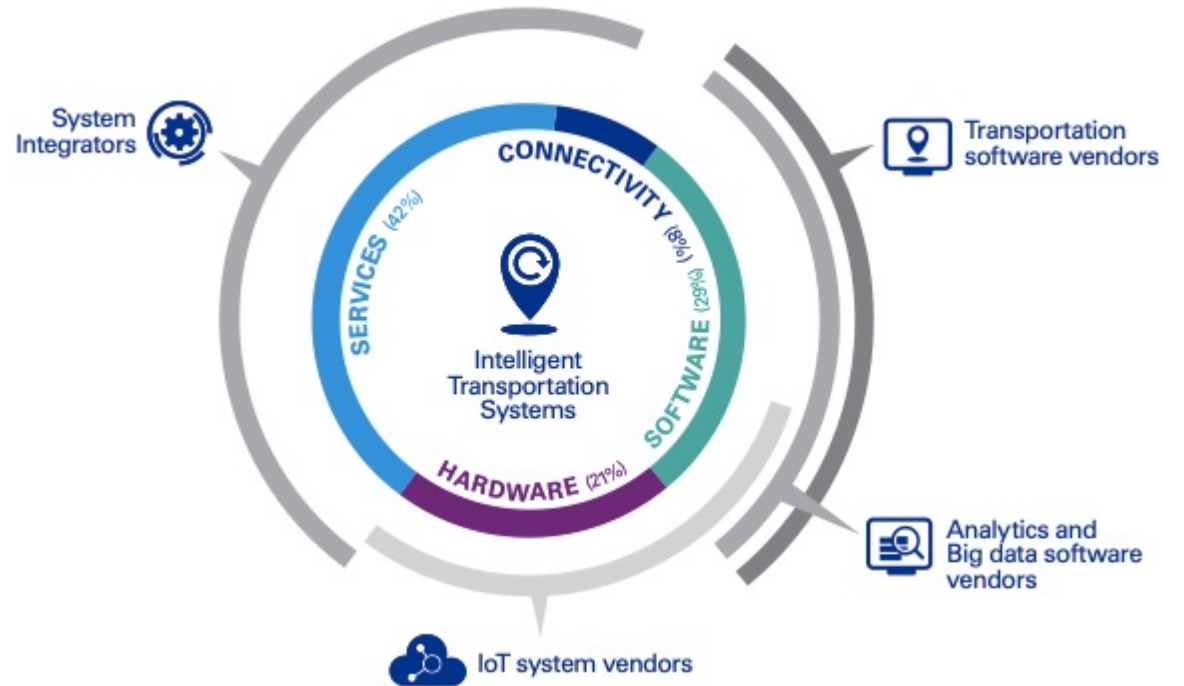


Source: www.grandviewresearch.com

Global intelligent transportation system market share, by type, 2019 (%)

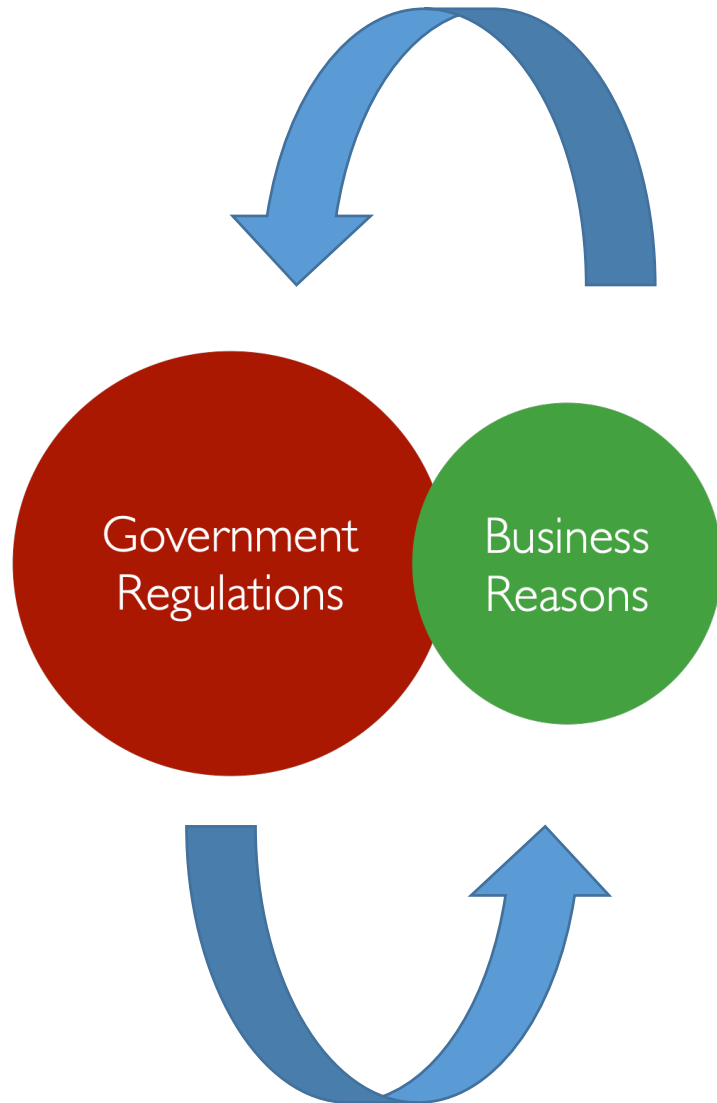


Source: www.grandviewresearch.com



Advanced Traveler Information System (ATIS)
 Advanced Traffic Management System (ATMS).
 Advanced Transportation Pricing Systems (ATPS)
 Advanced Public Transportation System (APTS)
 Emergency Management System (EMS)

Major Drivers



Public Sector – Safety / Un-manned operations / Transparency / Optimization

- Traffic Monitoring System
- Traffic Signal Control Systems
- Parking Convenience Systems
- Traffic Enforcement Cameras
- Accident-Avoidance Systems

Private - Compliance / Cost Reduction (operations) / Automation for scalability

- Fleet Management
- Asset Monitoring (warehousing)
- Logistics

EU Initiative Example

Concept

Framework

Project

Solution

IoT

IoV

Private

NVIDIA EGX™ AI Platform

IIoT

Gov-t

JHC Edge Tech

AIoT

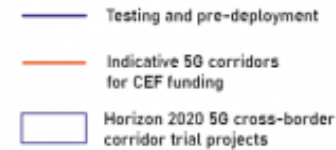
OpenSource

JHC Partnership Ecosystem

Trust IoT

IoHT

Europe boosts investment with €70 million in 5G with strong focus on connected transport by launching 11 new projects



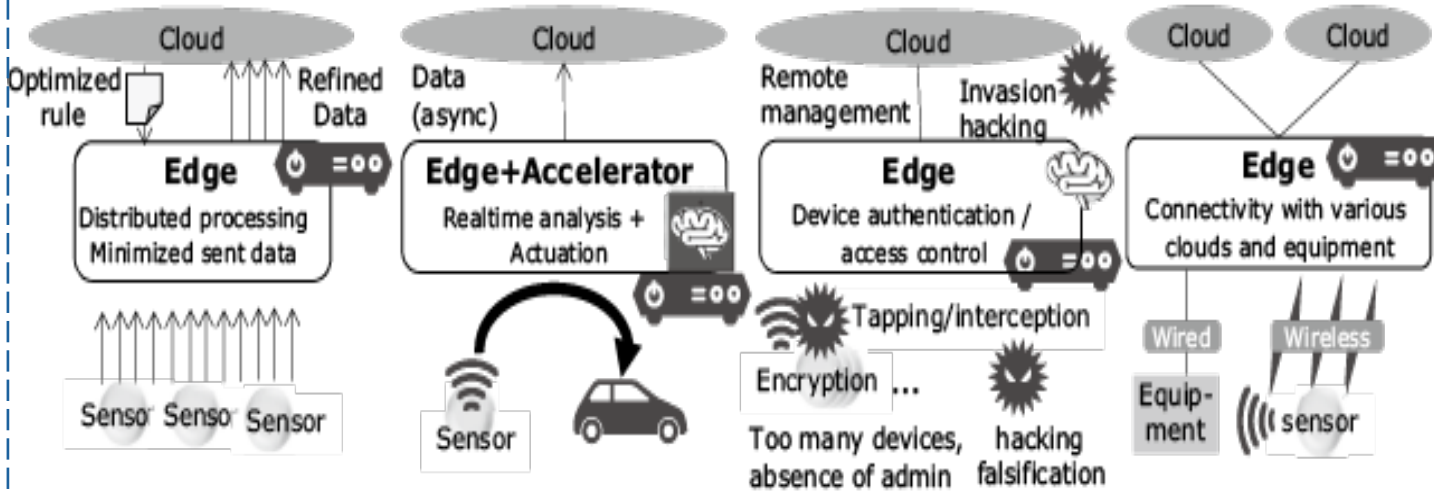
Edge Advantage and Disadvantage

Efficient system
resources use

Real-time
actuation

Security & Privacy
Protection

Connectivity for
High availability



Autonomous
distributed
coordination
technology

Acceleration
Technology

IoT Security
Technology

Connectivity
Technology

Standartization

Security

Deployment &
Scalability

Management &
Maintanance

Investment (infra + design)

Business Model

2

Product Offering – SIGM Series



SIGM Series Major Features



Extremely rugged fanless product, adaptable to extra harsh conditions

- EN50155, E-mark railway standard certification
- Aluminum alloy + stainless steel reinforced structure, fanless design, wide temperature range **-40~70°C**
- Onboard CPU and memory, **M12 connector**, shock-absorbing installation design
- Motherboard + daughter card + isolated power supply + expansion module All-In-One modular design
- Power supply, network port, serial port, DIO anti-surge isolation protection
- Dual **4G** LTE router + Gigabit **Wifi6**, support BDS+GPS dual-mode positioning
- S00X series power supply is **DC48/72/110V** railway standard specification
- T00X series power supply is **DC9~36V** wide voltage with ITPS smart switch power supply
- Meet the JHC EIO expansion bus specification, and can flexibly customize functional modules
- Rich IO functions, suitable for differentiated field application requirements



Structural Design for
Harsh Conditions



Long Term Stability in
Operation

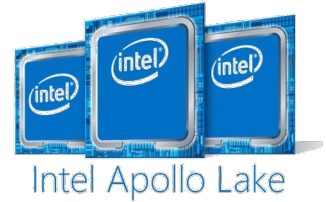


Design Flexibility for
SI needs

SIGM-2650



- Intel® Apollo Lake E3950 CPU
- DDR3L up to 1866MHz, On-board+SODIMM, Up to 8GB
- 1*DP, 1*VGA, 1*Smart Display, 3 Display Interface
- **2*GbE LAN with POE (M12) , 5*USB (2*M12)**
- 2*Iso.COM, 8-bit Iso. DIO, optional 2*CAN
- 1*2.5" Easy to pull hard drive rack , 1*Line out
- 4*Mini PCIe(1 optional mSATA), Support GPS/WiFi/LTE/4G
- EN50155, TPM2.0 security encryption
- DC 9~36V wide voltage power supply ITPS power management
- Optional railway standard power input DC48/72/110V($\pm 40\%$)



EN50155



Structural Design for
Harsh Conditions



Long Term Stability in
Operation



Design Flexibility for
SI needs

SIGM-3250



- Intel® Skylake/Kabylake-U CPU
- 2-Ch DDR4, On-board 4/8GB+SODIMM, up to 16GB
- 1*DP, 1*VGA, 1*Smart Display, 3 Display Interface
- 2*LAN(M12) , 4*POE (M12), 5*USB(2*M12), Built-in dongle interface
- 2*Iso.COM, 8-bit Iso. DIO, optional 2*CAN
- 1*2.5" Easy to pull hard drive rack , 1*Line out
- 4*Mini PCIe(1 optional mSATA), support GPS/WiFi/LTE/4G
- EN50155, E-Mark certification, support TPM2.0 security encryption,
- Railway standard power input DC 48/72/110V($\pm 40\%$)
- Optional DC 9~36 wide voltage power supply, with ITPS power management



EN50155



E-Mark



Structural Design for
Harsh Conditions



Long Term Stability in
Operation



Design Flexibility for
SI needs

SIGM-3252



- Intel® Skylake/Kabylake-U CPU
- 2-Ch DDR4, On-board 4/8GB+SODIMM, upto 16GB
- 1*DP, 1*VGA, 1*Smart Display, 3 Display Interface
- 2*LAN(M12), 4*POE (M12), 5*USB(2*M12), Built-in dongle interface
- 2*isolated COM, 8-bit Iso. DIO, optional 2*CAN
- 2*2.5" easy-to-draw hard disk rack, 2*Line out
- 4*Mini PCIe (1 optional mSATA), support GPS/WiFi/LTE/4G
- EN50155, E-Mark certification, support TPM2.0 security encryption
- Iron standard power input DC 48/72/110V ($\pm 40\%$)
- Optional DC 9~36 wide voltage power supply, with ITPS power management



EN50155



E-Mark



Structural Design for
Harsh Conditions

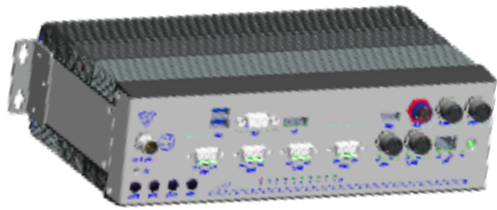


Long Term Stability in
Operation



Design Flexibility for
SI needs

SIGM-3251



- Intel® Skylake/Kabylake-U CPU
- 2-Ch DDR4, On-board 4GB+LPDDR4 4GB
- Onboard AI acceleration chip, AI acceleration computing power 8TOPS (INT8)
- 1*DP, 1*VGA, 1*Smart Display, 3 Display Interface
- 4*LAN(M12), 1*SFP, 6*USB(2*M12), Built-in dongle interface
- 1*2.5" Easy to pull hard drive rack , 1*Line out
- 4*Iso.COM, 10-bit Programmable GPIO with LED
- 4*Mini PCIe(1 optional mSATA), support GPS/WiFi/LTE/4G
- EN50155 certification, support TPM2.0 security encryption,
- Railway standard power input, DC 9-36V wide voltage power supply



EN50155



Structural Design for
Harsh Conditions



Long Term Stability in
Operation



Design Flexibility for
SI needs



3

Railway Focused Applications

Major Applications



**Vehicle
monitoring
and
diagnosis
system**



DMI



PIS



CCTV



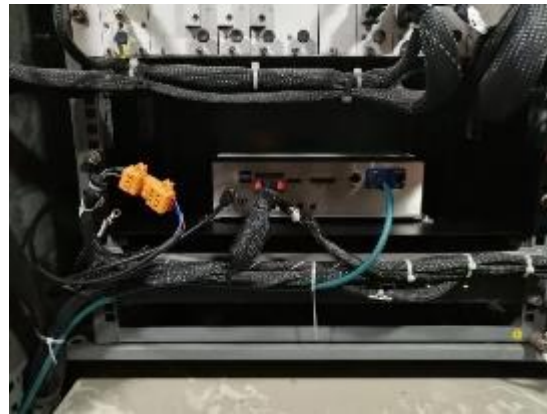
**Freight train
intelligent
identification
system**



SIGM-2650

Harbin Metro Line 1 PIS System

The Harbin Metro PIS passenger information system project uses JHCTECH SGM-2650/S002 products as the main control of the play control system.

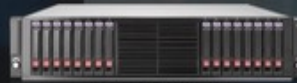


LCD TV

Camera



PIS---Passenger Information System



数据库服务器
Database Server



有线和无线交换机
Switch

WIFI+LAN



SIGM-2650



SIGM-3250



Display



Broadcast

A service system that provides passengers with various types of information in the train. Under normal circumstances, the passenger information system provides real-time dynamic multimedia information such as travel instructions and train schedules. The on-board PIS system provides audio broadcasting platform, video program broadcasting platform, emergency alarm, warning platform and emergency call platform for passengers and the central control room; it is composed of PA broadcasting system, on-board video system, and intelligent video monitoring system.

SIGM-3250

Maglev Train Health Inspection

The maglev train inspection project uses JHCTECH SIGM-3250 product as the track health monitoring and inspection detector.



Sensor



Camera



Collector



SIGM-3250
Wifi+LAN



Control Center



Monitoring And Diagnosis System



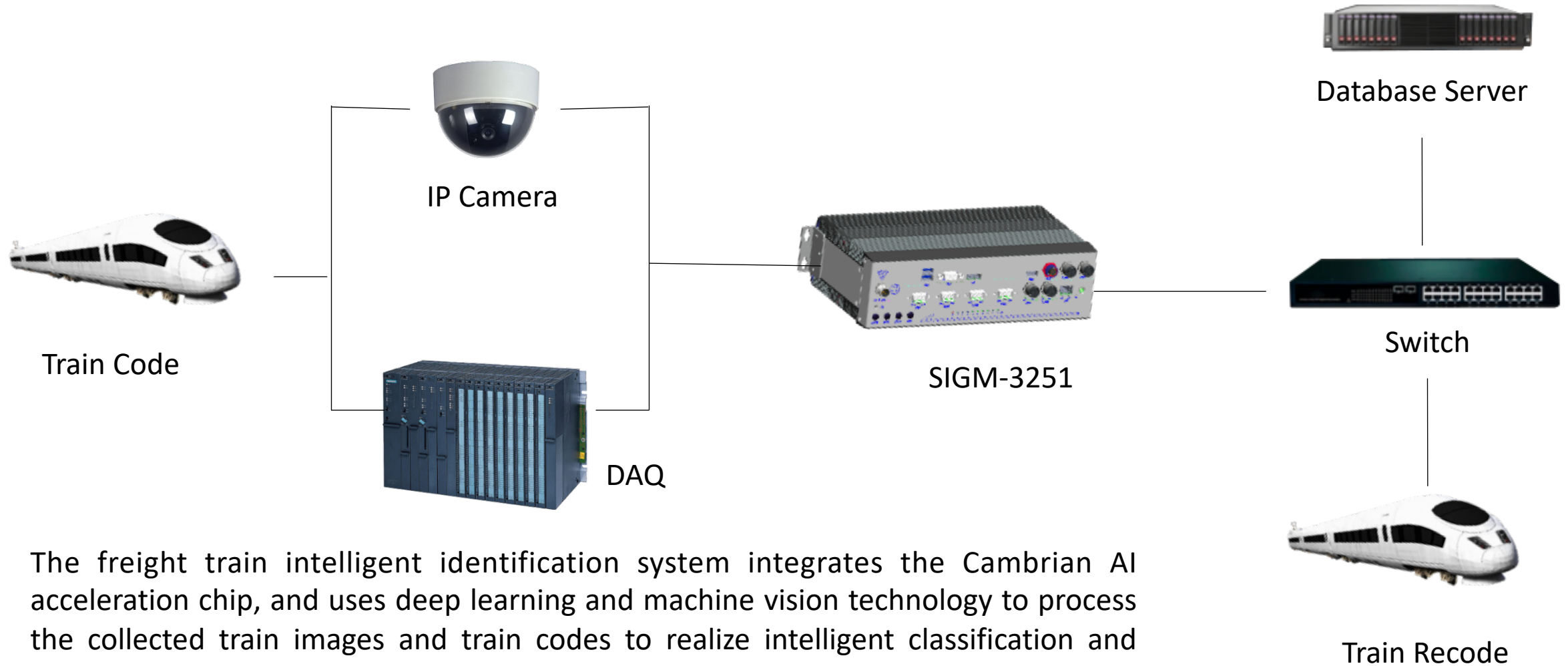
SIGM-3251

Promote freight trains towards intelligent marshalling

The freight train intelligent marshalling project uses JHCTECH Sigm-3251 product as the main control of the freight train intelligent identification system.



Freight Train Intelligent Identification System



The freight train intelligent identification system integrates the Cambrian AI acceleration chip, and uses deep learning and machine vision technology to process the collected train images and train codes to realize intelligent classification and cutting of train cars, re-code, and check the train status , Form the inspection report to improve the quality and efficiency of the intelligent code reorganization and inspection of freight trains.

SIGM-3252

Promote the rapid development of India's high-speed rail CCTV

The Indian high-speed rail project uses JHCTECH SIGM-3252 product as the main control of the closed-circuit television system.



CCTV---Closed-Circuit Television



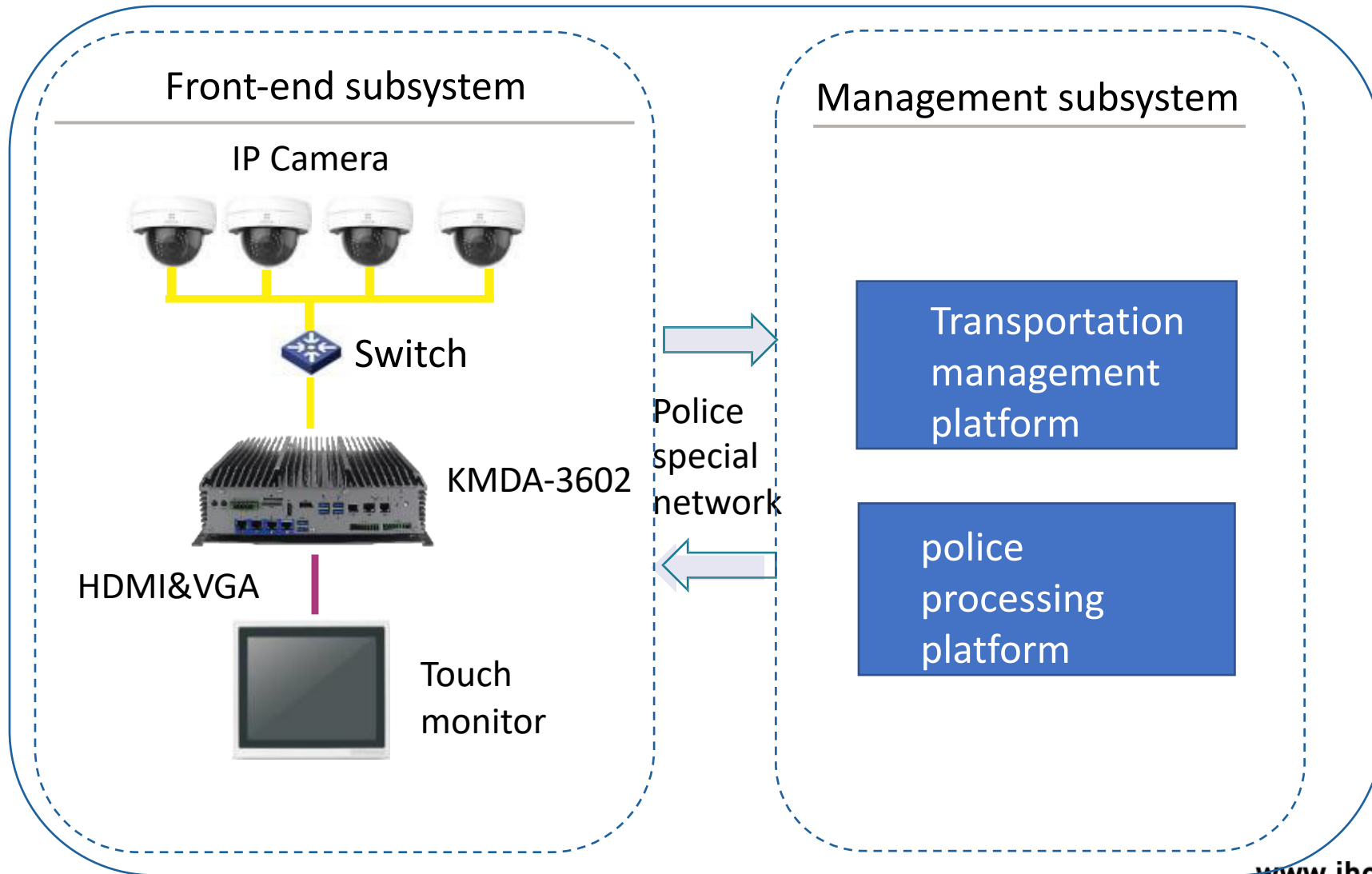
Closed-circuit television (CCTV) provides a comprehensive train internal monitoring system solution to improve the safety of passengers by monitoring the conditions of train cars and cabs. The situation of each carriage can be recorded by an IP camera and directly transmitted to the PC for real-time high-definition display. This allows employees to monitor all train cars in the cab.



Special In-Vehicle System

Police Vehicle

Comprehensive Law Enforcement System



Police Vehicle Comprehensive Law Enforcement System



Optimized for Full range of Police Vehicles

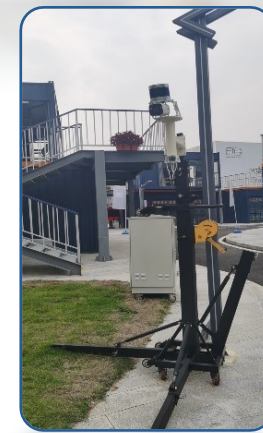
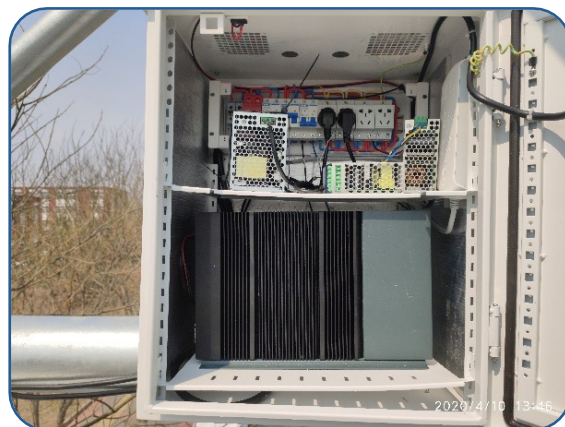
V2X Driverless Projects

Private (sales can provide more information)

- **Vehicle Violation Monitoring Project on Urban Road Section in Mumbai Phase III, India**
- **The second phase of the intelligent traffic monitoring project for urban roads in Dubai, UAE**
- **Intelligent video law enforcement in-vehicle project for the Los Angeles Police Force**
- **Indra non-stop weighing system**
- **Columbia highway project**

Application Example

Traffic Monitoring and Toll Collecting



Q & A

Stay in Touch



JHC Technology Development Co.,Ltd.



@ShenzhenJHCTECH



@JHC_Technology



@JHCTECH



CONTACTS

Tel: + 886-933-712-099

Email: rita@jhc-technology.com

Taipei, Taiwan (Global Office)

