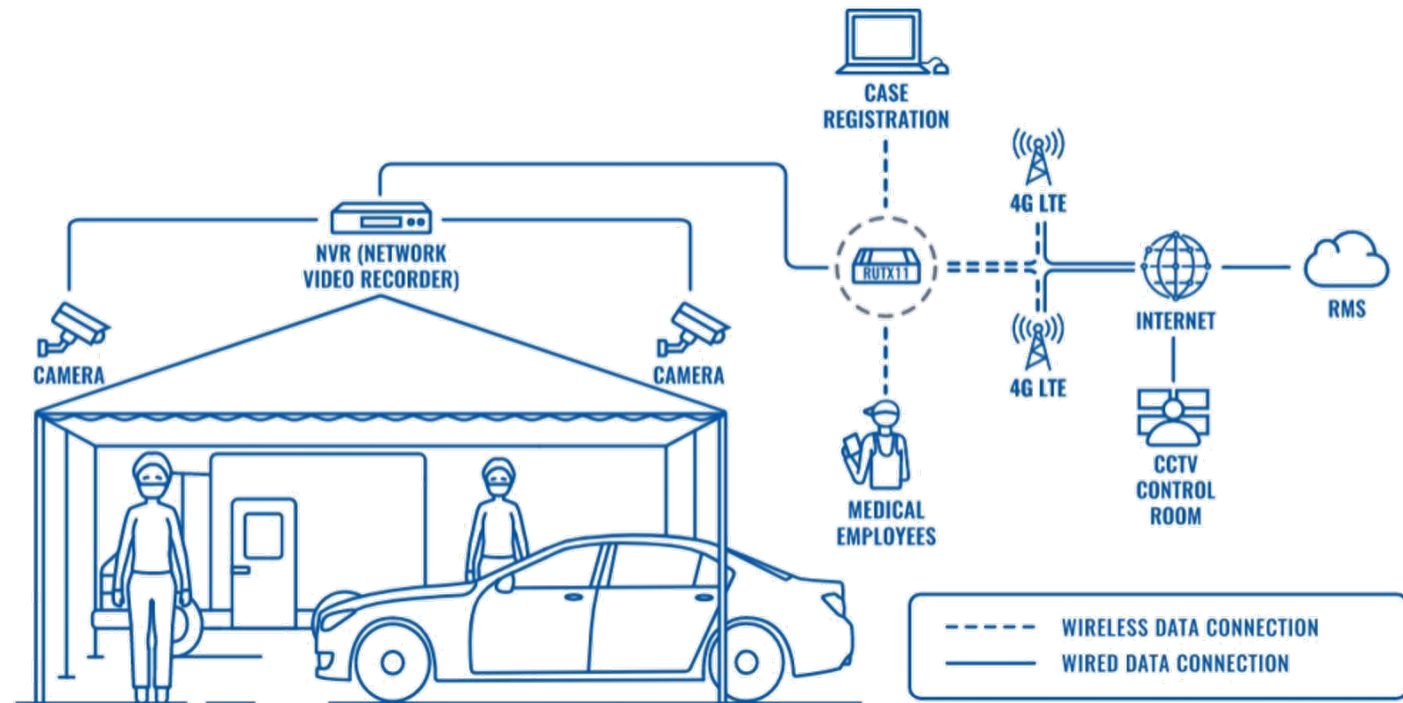


Intelligent Transportation System

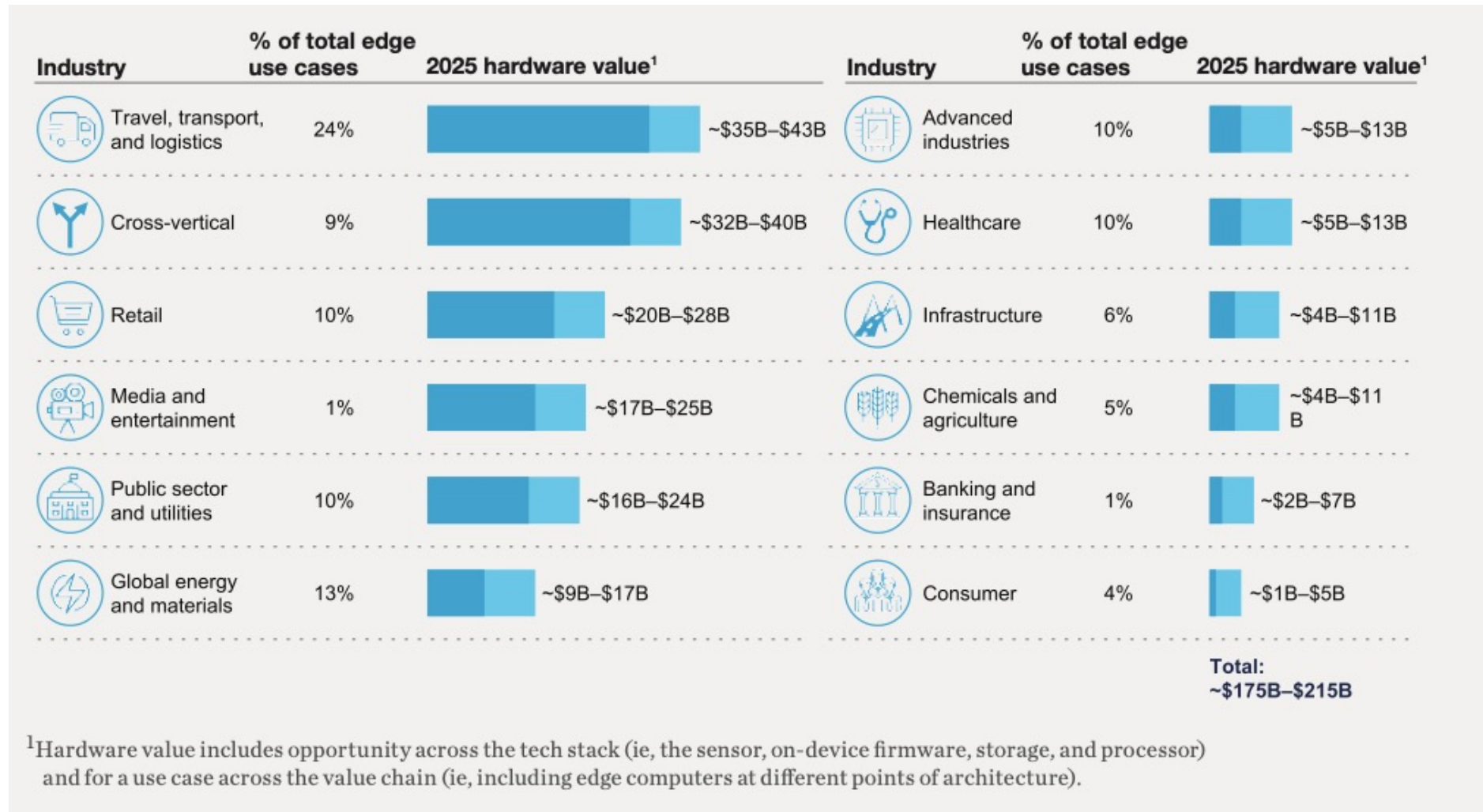
April 28th 2021



1

Market Trends & Industry Directions

Market Overview

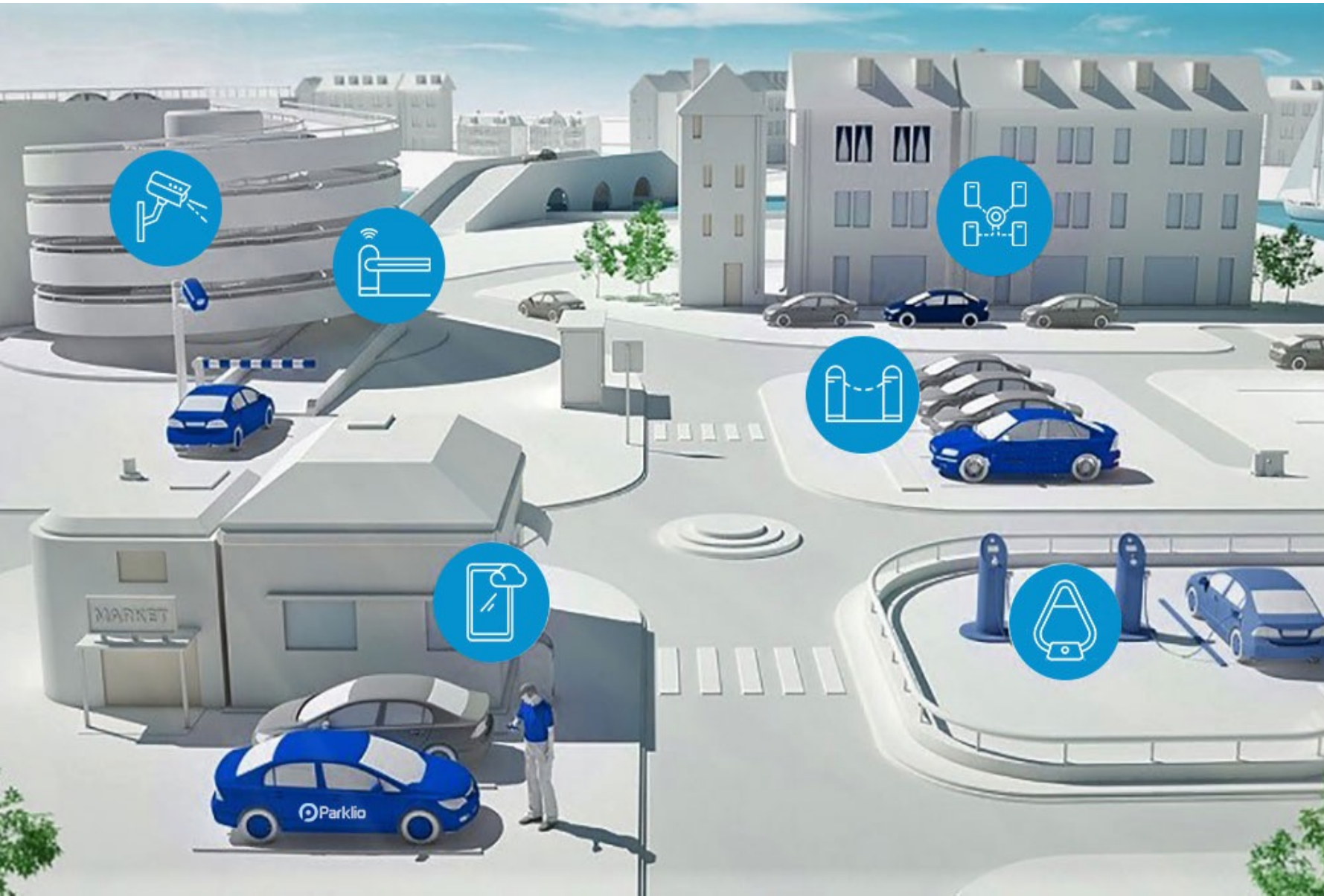


Industrial Computing

- Video Analytics
- Data Monitoring
- xloX (AIoT; IIoT; IoV etc)
- Data Caching
- Advanced Analytics
- Location Services
- Optimized local content

Source: JM Chabas, Chandra Gnanasambandam, Sanchi Gupte, and Mitra Mahdavian | McKinsey & Company

Intelligent Vehicle



V2D – Vehicle to Device

V2V – Vehicle to Vehicle

V2P – Vehicle to Person

V2G – Vehicle to Grid

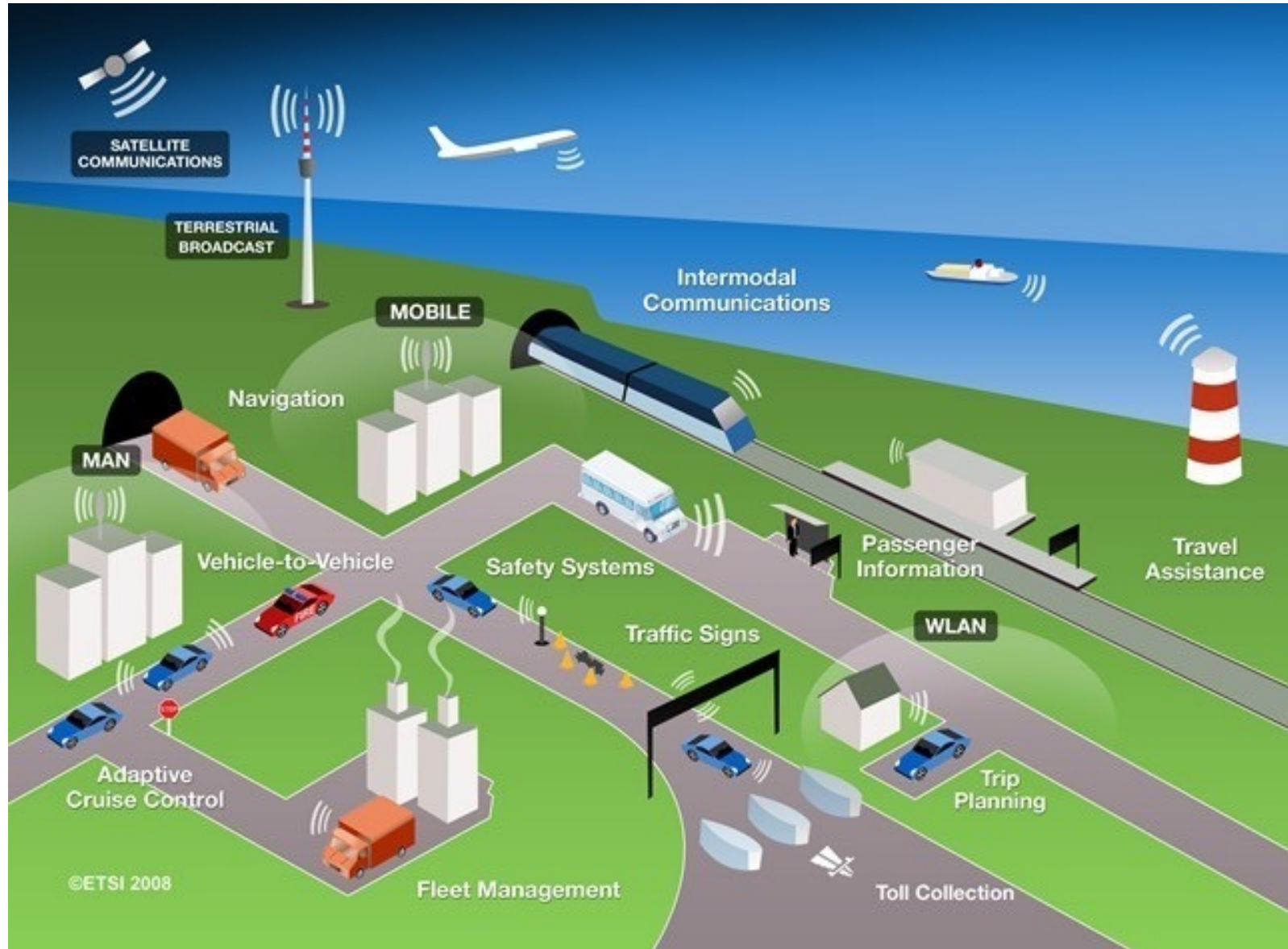
V2I – Vehicle to Infrastructure

V2N – Vehicle to Network

- Collect Data
- Compute Data
- Visualize Data

Image from Parklio.com
www.jhctechology.cn

Intelligent Transportation System



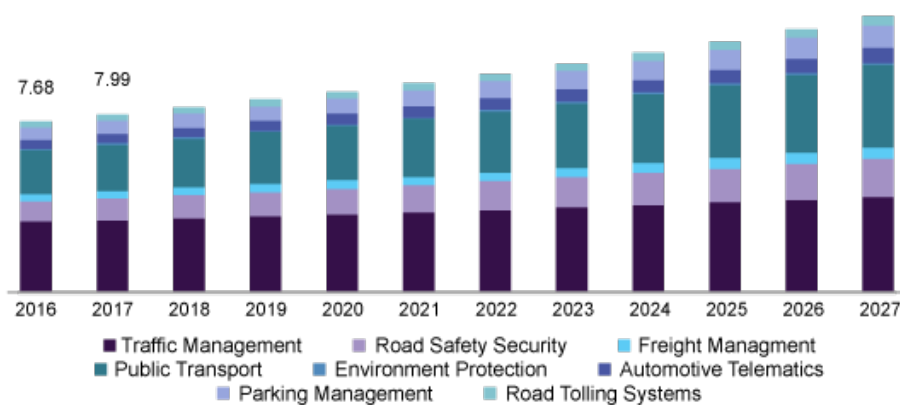
ETC-Electronic Toll Collection

- ❖ Auto Vehicle Classification
- ❖ MLFF-Multi Lane Free Flow
- ❖ WIM-Weigh in motion
- ❖ Road Safety
- ❖ Mobile Enforcement

- Collect Data
- Compute Data
- Visualize Data

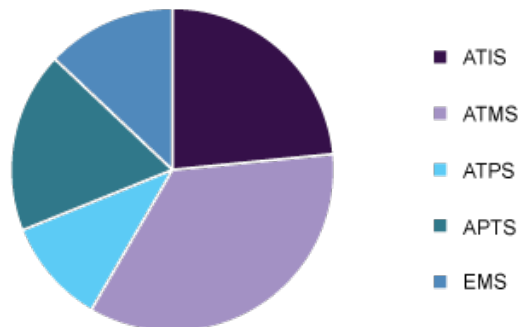
Intelligent Transportation Market Major Trends

U.S. intelligent transportation system market size, by application, 2016 - 2027 (USD Billion)

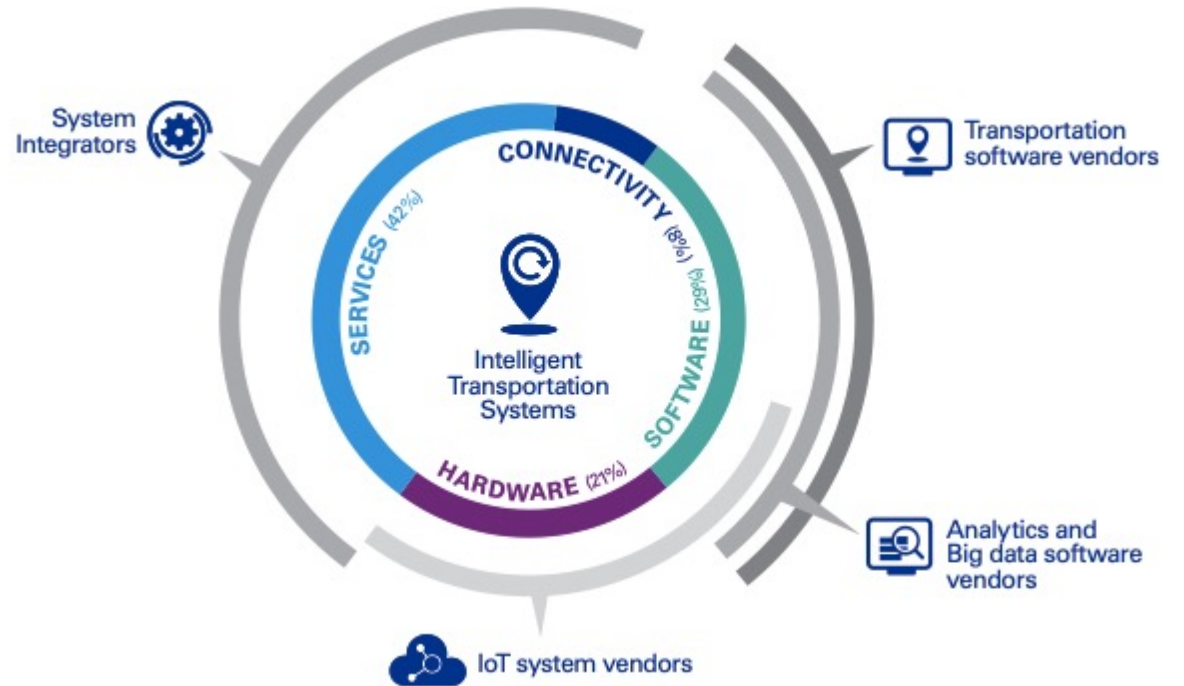


Source: www.grandviewresearch.com

Global intelligent transportation system market share, by type, 2019 (%)



Source: www.grandviewresearch.com



- ❖ Advanced Traveler Information System (ATIS)
- ❖ Advanced Traffic Management System (ATMS).
- ❖ Advanced Transportation Pricing Systems (ATPS) !
- ❖ Advanced Public Transportation System (APTS) !
- ❖ Emergency Management System (EMS) !

North America

Latin America

Europe

Asia Pacific

Middle East & Africa

System Type



- ❖ ETC Daily transactions – Daily average 16M
- ❖ Usage – 100%
- ❖ Success Tolling rate – 99.97%



North America

Latin America

Europe

Asia Pacific

Middle East & Africa

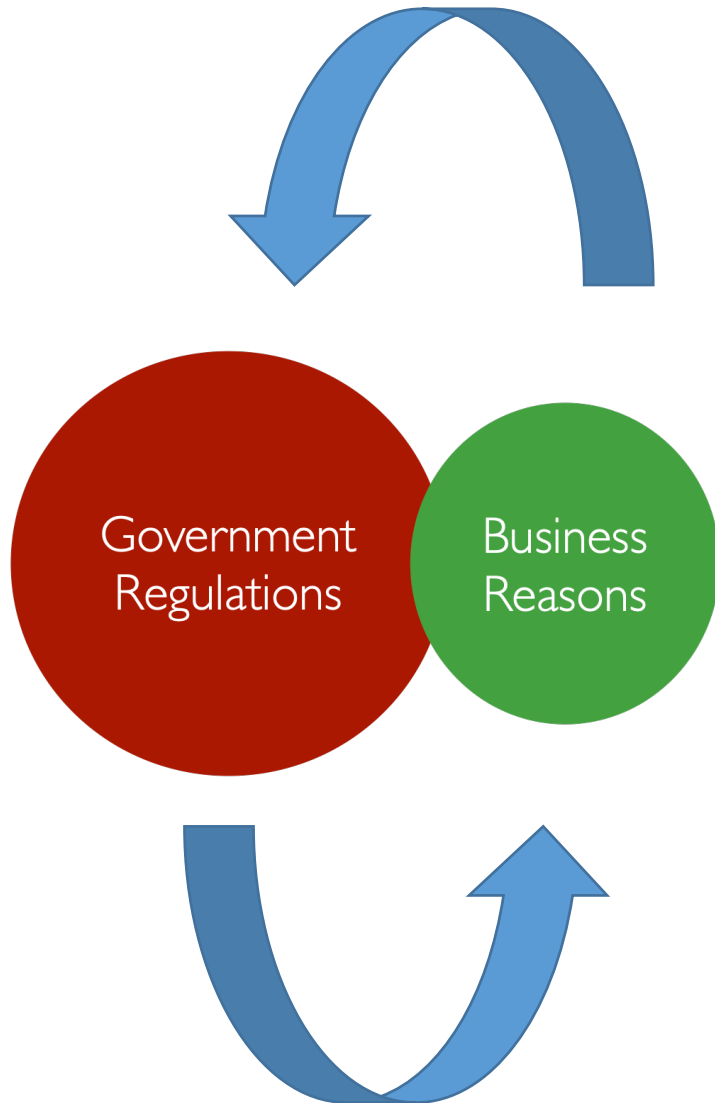


MLFF Tolling since Dec. 2013

- 321 gantries (1,307 ETC lanes) on mainlines.
- FETC combines all the devices you need on single gantry – from open standard ISO 18000 6C and multi-protocol RFID systems, enforcement modules and ALPR systems, and audit modules.

<https://www.youtube.com/watch?v=F0-TwDzeXd0>

Major Drivers



Public Sector – Safety / Un-manned operations / Transparency / Optimization

- Government investments in smart transportation
- Traffic Monitoring System
- Traffic Signal Control Systems
- Parking Convenience Systems
- Traffic Enforcement Cameras
- Accident-Avoidance Systems

Private - Compliance / Cost Reduction (operations) / Automation for scalability

- Fleet Management
- Asset Monitoring (warehousing)
- Logistics

Barriers - mostly related to legacy projects and systems

- Huge capital requirement
- Big data increases complexity
- Long downtime for replacing the existing system
- Immature market conditions

Special price bundle promotion

~Limited promo period : 2021 April 28 - 2021 May 31



BRAV Box PC

+



Cambricon MLU series
computing accelerator card

=

Bundle Promotion

- BRAV- 7302

+

Cambricon MLU220-MXM
* Compatible w NVIDIA GTX

- BRAV- 7501
- BRAV- 7520
- BRAV- 7521

+

Cambricon MLU270
* compatible w NVIDIA Tesla T4

=

- BRAV- 7201

+

Cambricon MLU220-M.2
* compatible w NVIDIA Jetson NANO



Special discount:
up to **25% off**

Pls contact your sales manager
for more detail

2

Product Offering



Main Features



Extremely rugged fanless product

Adaptable to extra harsh conditions

- Aluminum alloy + stainless steel reinforced structure,
- fanless design, wide temperature range -40~70°C.
- Compact Size, compatible with various cabinet size.
- Modularization design, convenient for maintenance.
- Rich IO functions, suitable for differentiated field application requirements.
- Excellent anti-shock performance. TPM 2.0 optional.



Structural Design for
Harsh Conditions



Long Term Stability in
Operation



Design Flexibility for
SI needs

KMDA-3920



Key Specification

- Chipset H110/Q170
- Intel® Kabylake-S/Skylake-S Core I3/I5/I7 CPU
- 2*DDR4 2400/2133MHz SODIMM, up to 32GB
- DP+HDMI+VGA, Optional 3 independent displays(Q170)
- 2/4*LAN, 4*USB3.0, 3*USB2.0,4*COM,8-bit DIO
- 1*Mini PCIe(PCle+USB),1*M.2 2242B-Key
- PCIeX16+PCleX4 or 2*PCI expansion
- 1*mSATA, 2*2.5" SATA, support Raid0,1(Q170)
- Support Intel® vPro(Q170)and TPM2.0
- DC 12~24V Wide Power Input
- Desktop Mounting,Wall Mounting

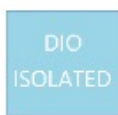
KMDA-3230

Key Specification



- Aluminum chassis, Fanless design
- 8th Intel®Core i3/i5/i7/CeleronU CPU
- 2*DDR4 2400MHz SODIMM, Up to 32GB
- 1*HDMI, 1*DP, Support dual 4K display
- 1*Line out&Mic, 4*USB 3.1, 2*USB 2.0
- 5*GbE LAN, 5*COM, 8-bit IsoDIO
- 1*mSATA, 1*2.5" SATA tray for storage
- 1*M.2, 2230 E-Key, 1*Mini-PCIe, 1*SIM Slot
- DC 9~36V Wide Power Input

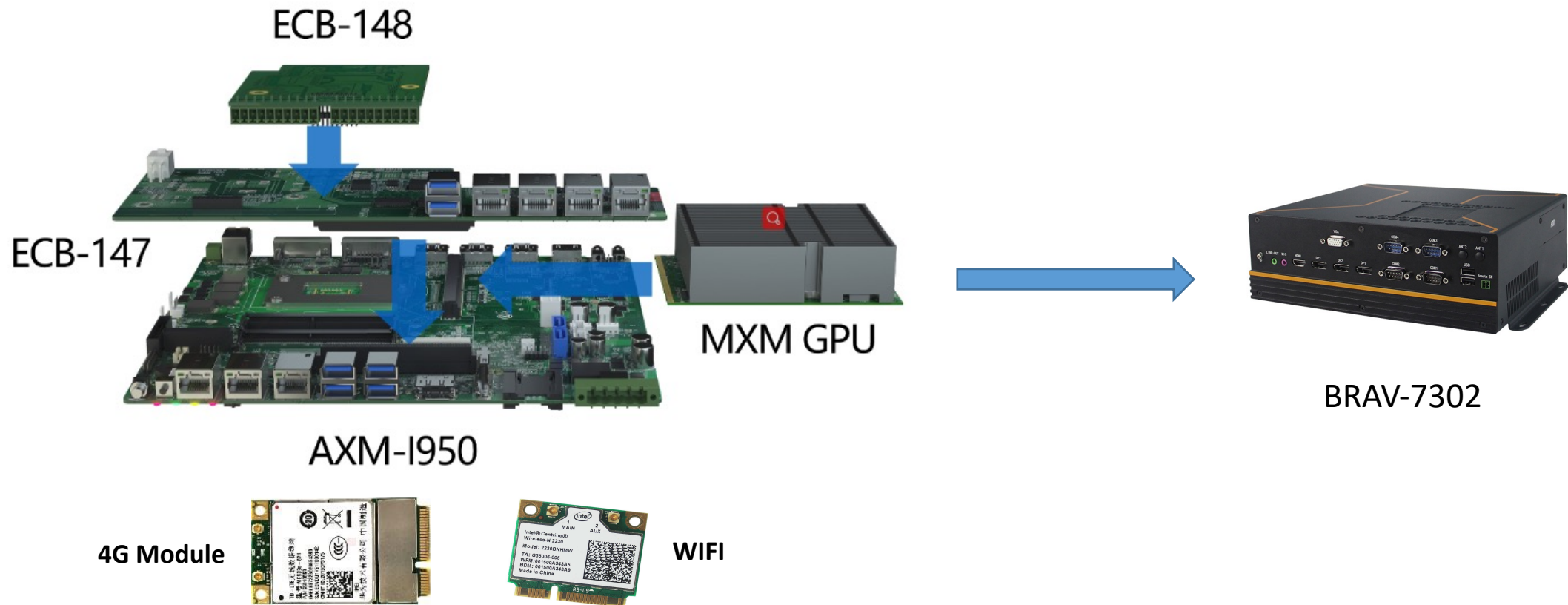
KMDA-3202



Key Specification

- Intel® Skylake-U/Kabylake-UCPU
- 2*DDR4 2133MHz SODIMM, Up to 32GB
- 1*DP, 1*HDMI, Dual 4K display
- 3*Gig LAN, 4*POE, 4*USB3.0, 5*USB2.0(one inside)
- 6*COM, 1*PS/2, 16bit Iso. DIO, 8bit DIO, Audio out/Mic
- 1*F-Mini PCIe(PCIe+USB),1*M.2 2242 B-Key
- 1*F-mSATA, 1*2.5" SATA HDD/SSD driver bay
- Support Intel iVpro and TPM2.0
- DC 9~30V Wide Power Input
- Desktop Mounting

Skylake/Kabylake-S+MXM GPU(1050Ti,1060,1070)



BRAV 7302



Key Specification

- CPU and GPU fan cooling, independent air passage
- Intel® Kabylake-S/Skylake-S Core I3/I5/I7 CPU
- 2400/2133MHz SODIMM, Up to 32GB
- 1*MXM 3.1 socket, support NVIDIA/AMD GPU Intel
- 1*DP+1*HDMI+1*VGA, GPU 3*DP+1*HDMI
- 3/7*LAN, 6*USB3.0, 3*USB2.0, 4*COM,16DIO,Audio
- 1*Mini PCIe(PCle+USB),1*M.2 2242 B-Key
- 1*mSATA, 1/2*2.5" SATA, support Raid0,1 Support Intel®
- iVpro and TPM2.0
- DC 6~48V Wide Power Input



ALAD Family Member Introduction

ALAD Monitor



ALAD
101T



ALAD
121T



ALAD
151T



ALAD
171T



ALAD
181T



ALAD
191T



ALAD
211T



ALAD K-Series



ALAD
K1001T(P)



ALAD
K1220T(P)



ALAD
K1520T(P)



ALAD
K1720T(P)



ALAD
K1820T(P)



ALAD
K1920T(P)



ALAD
K2120T(P)



ALAD-A1001T



Key Specification

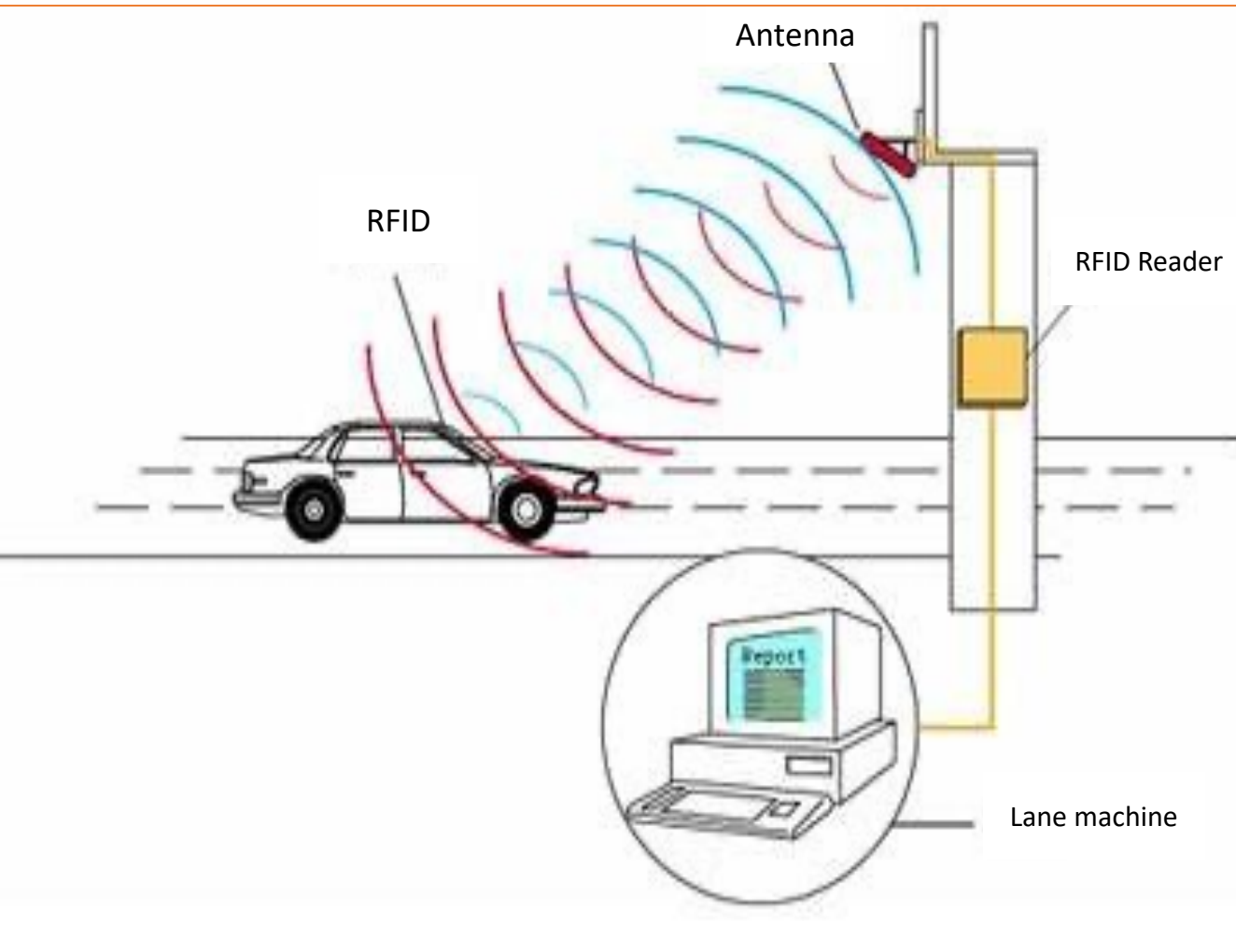
- Intel® Baytrail Celeron J1900 CPU
- 10.1" LED TFT LCD, Capacitive/Resistive touch
- 1*DDR3L 1333MHz SODIMM, Max 8GB
- 2*Mini PCIe(PCle+USB and mSATA)
- 2*COM, 2*LAN, 1*USB3.0, 3*USB2.0
- 1*2.5"HDD Bay, 1*mSATA
- 1*HDMI, 2*2W Speaker
- DC 9~24V Power input



3

Specific Applications

Electrónico Peaje Systems



Anti-Shock
Moisture-proof
Dustproof
Wide operatio temperature

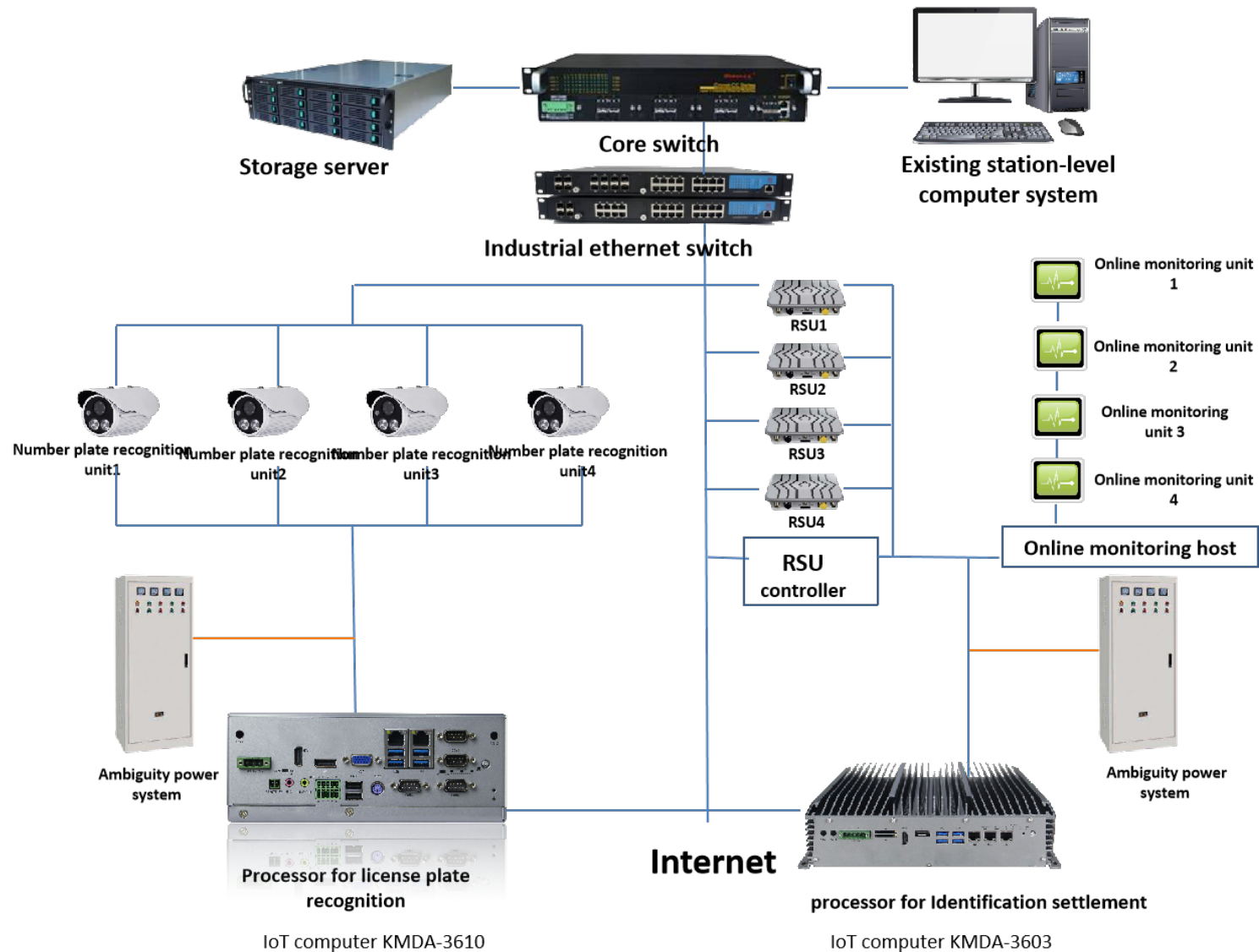
7*24 hours non-stop

Multiple OS
Easy for maintenance

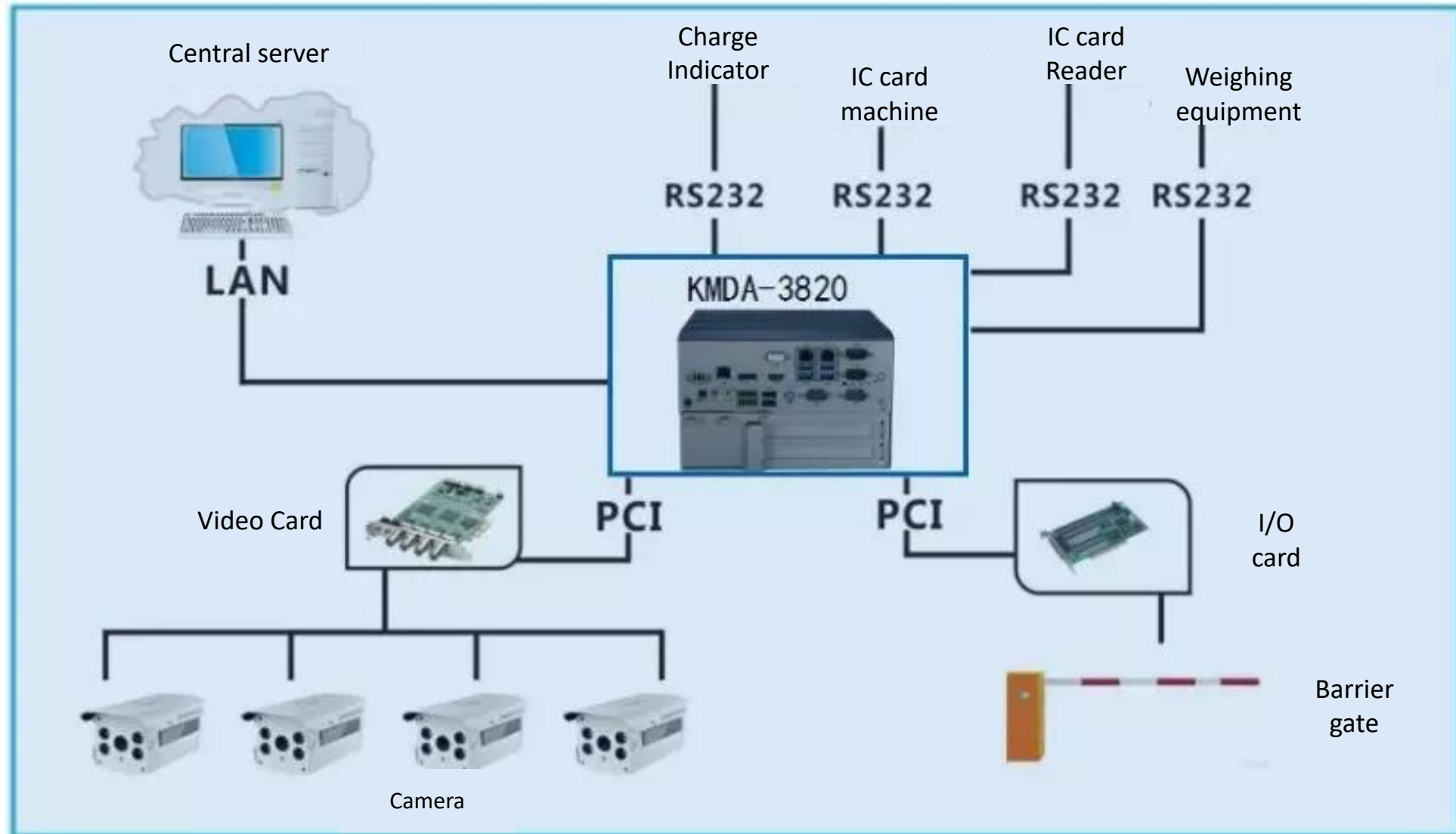
Extensible PCI slot



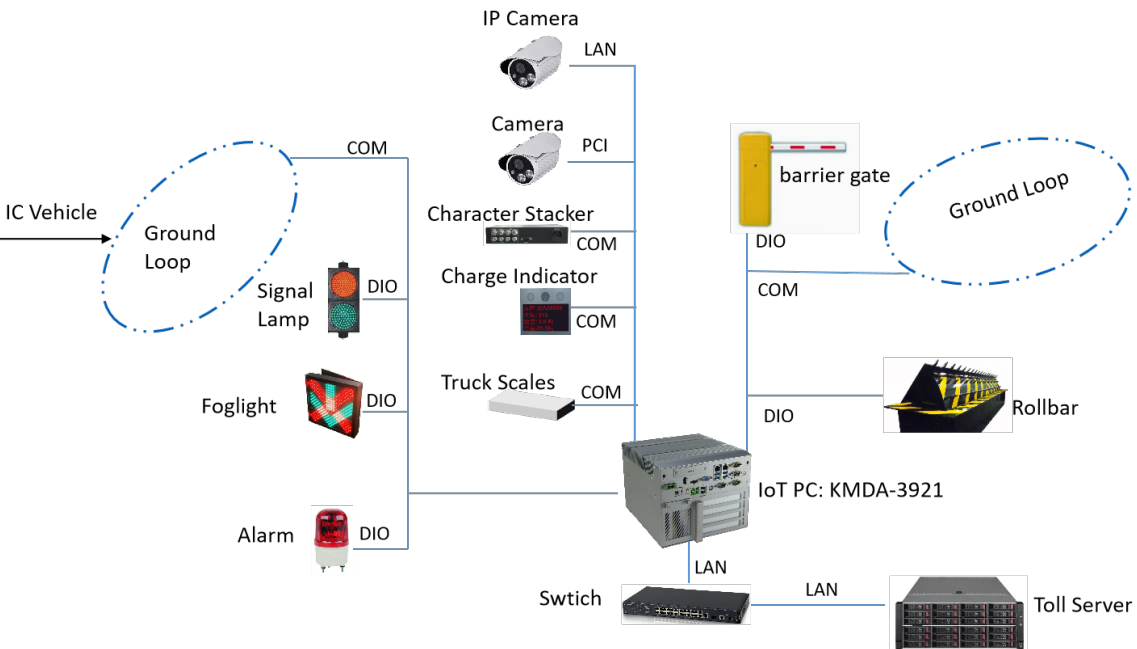
Multi lane Free Flow



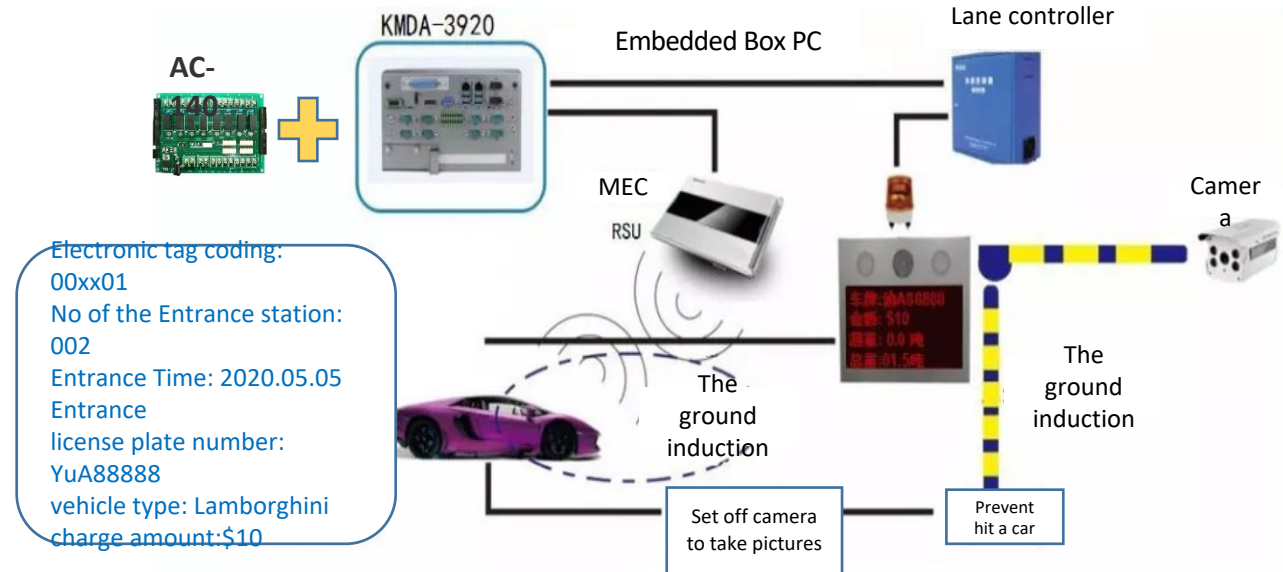
MTC Lane Tolling



ETC/MTC Mixed Lanes



ETC Lane Tolling



ETC Lane Controller

KMDA-3921/S001

i3-6100 2C/4T 3.7GHz

8G DDR4, 128G SSD+1T HDD

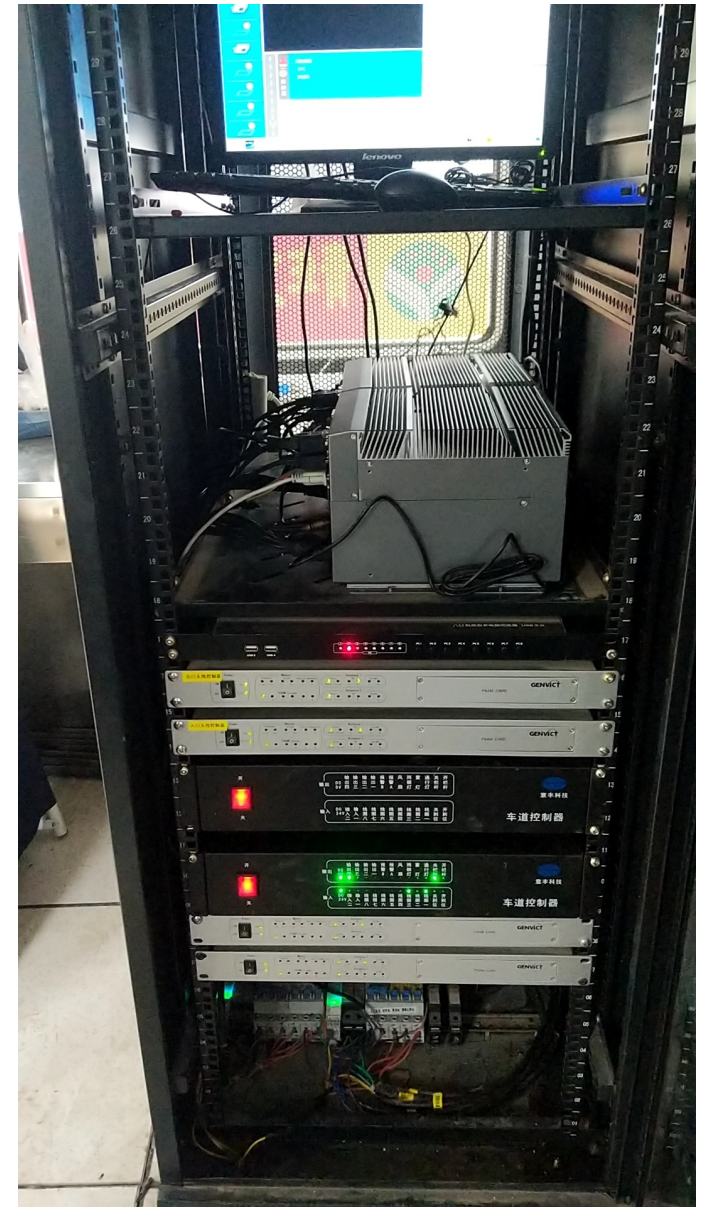
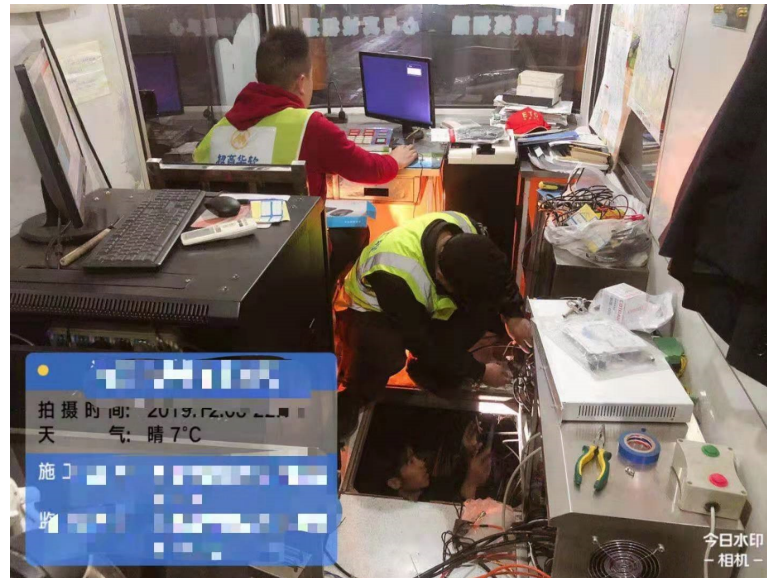


ETC Lane Controller

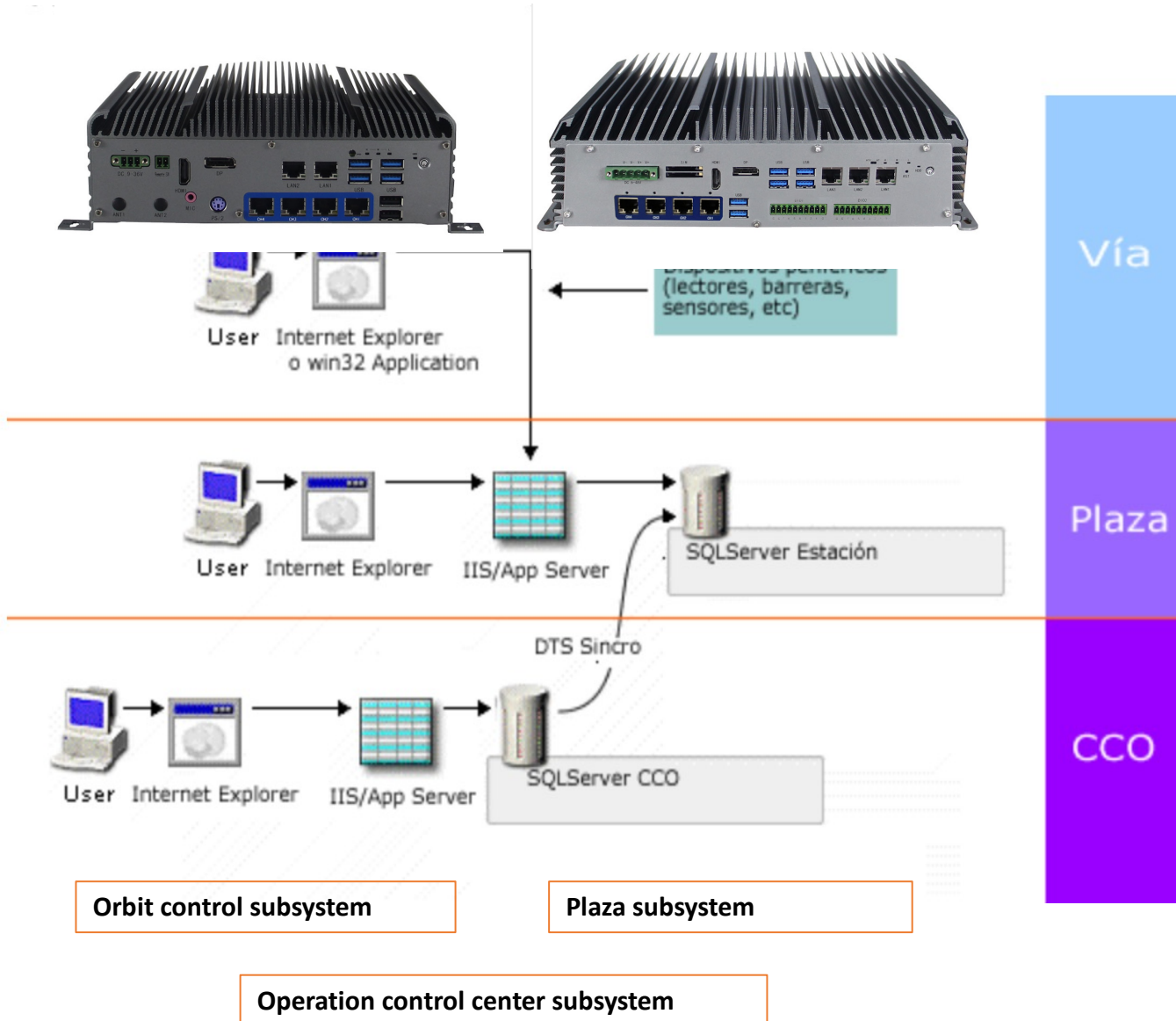
KMDA-3921/S001

i3-6100 2C/4T 3.7GHz

8G DDR4, 128G SSD+1T HDD



ETC Lane Controller



The sensors placed on the tracks can verify the correct classification of vehicles

Receive cash payment, sensor card, duty-free driving and provide transaction receipt. Indicate the categories and rates of charges to the user

Control traffic lights, sirens and electrical barriers

Check the height, count the number line, check whether it is correct

Digitize and record the image of the Lane in the VIA so that the generated exceptions can be reviewed

Transmit transaction information, operational data and images to the control room

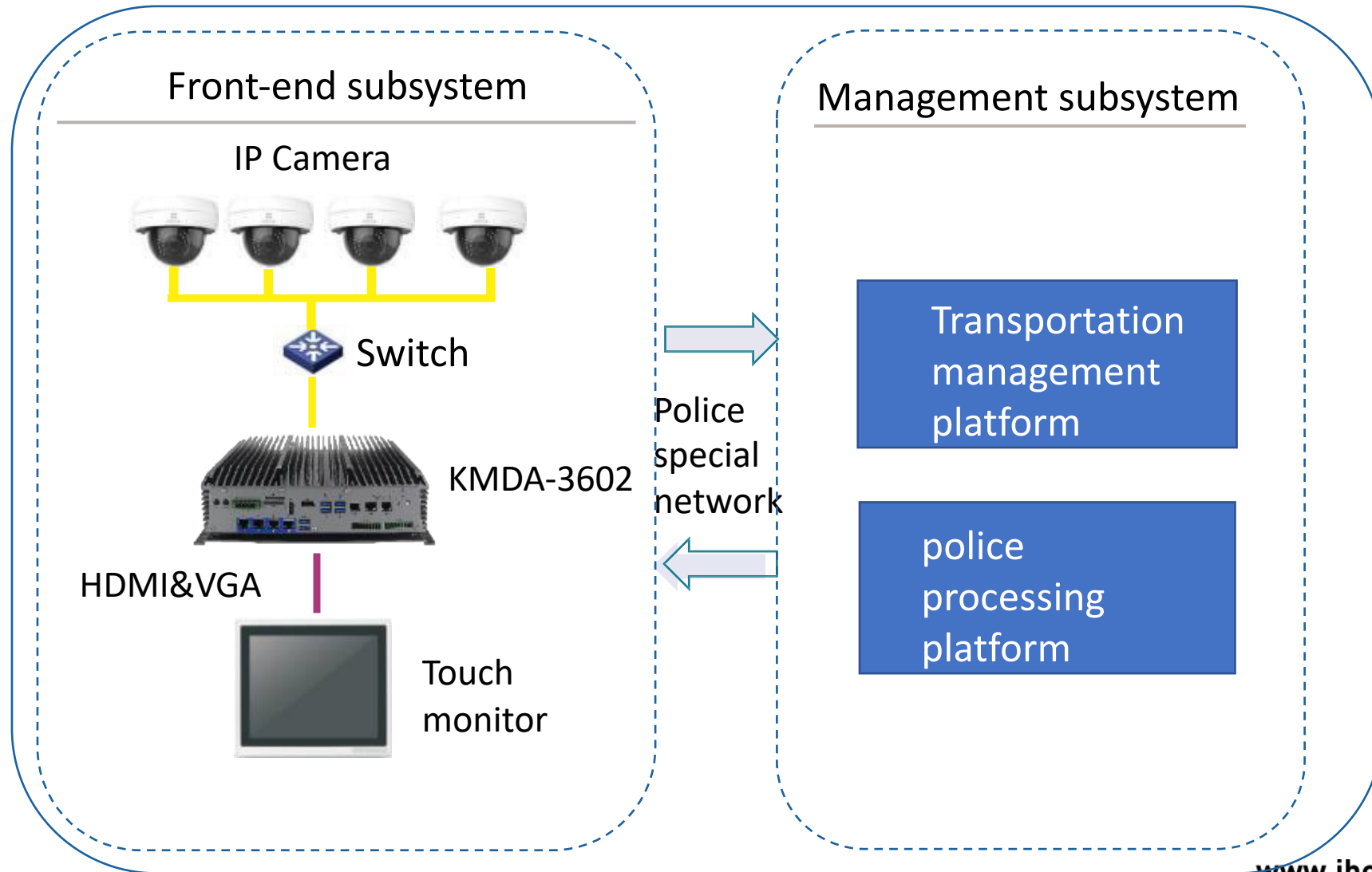
Provide online maintenance function

Support UPS backup power supply, in the case of power failure, UPS can keep the controller work for 20 minutes



Special In-Vehicle System

Mobile Enforcement System



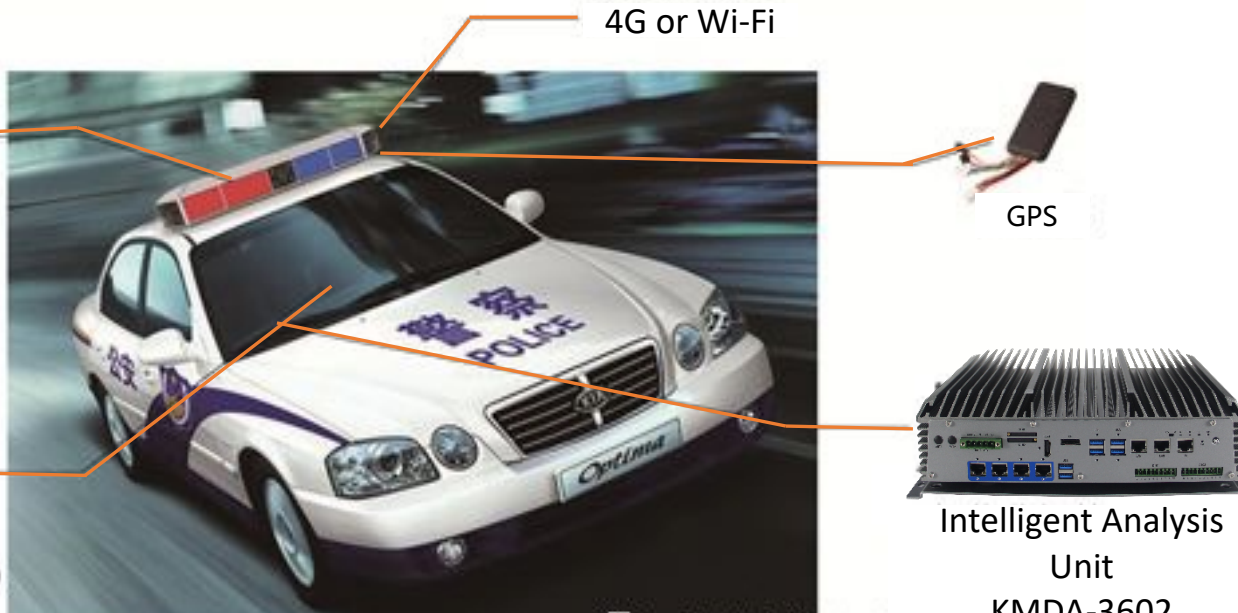
Police vehicle/police motorcycle mobile patrol monitoring system

Data Acquisition Unit

Embedded HD
Camera



Management Control
Unit
Touch Monitor ALAD-
101T



Intelligent Analysis
Unit
KMDA-3602

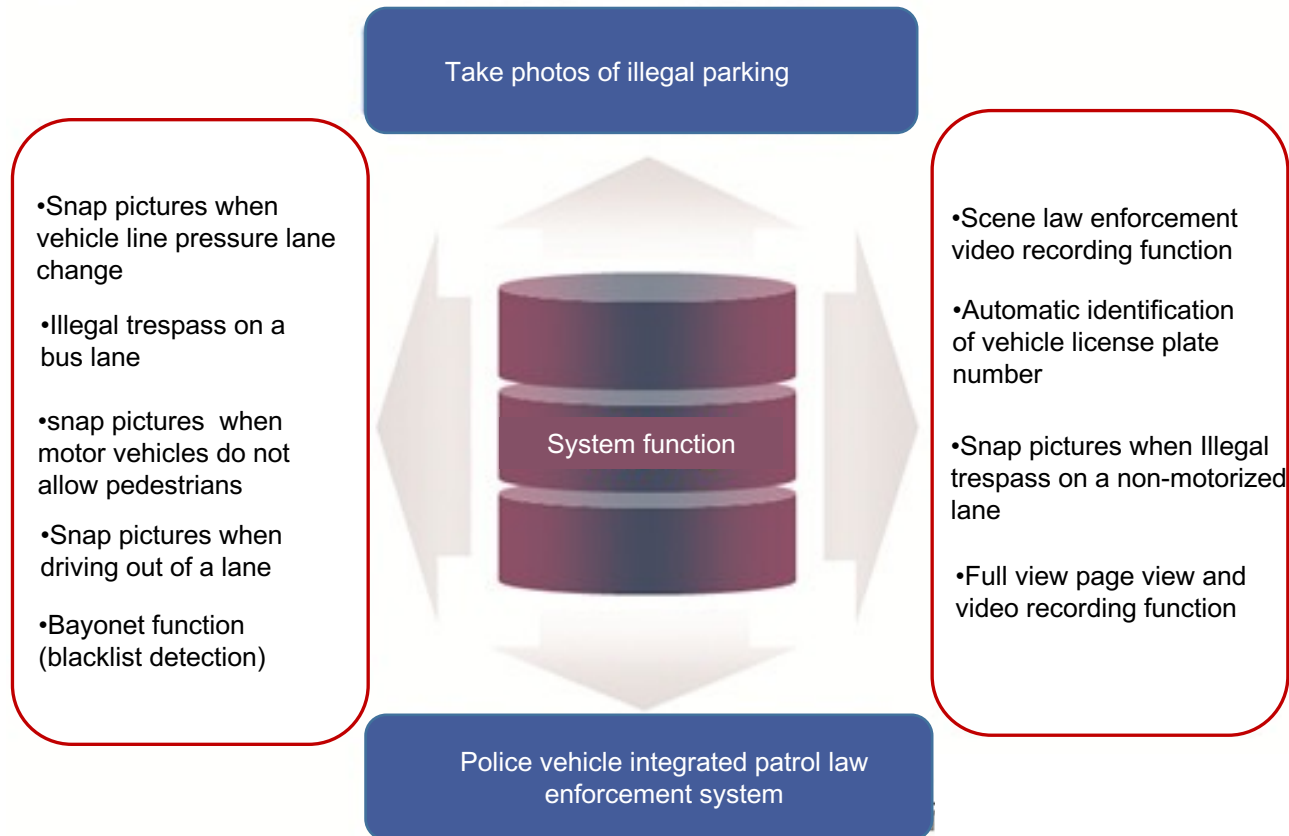
The system uses high-definition camera shooting, computer forensics and computer technology, can be in the process of patrol, easy to road vehicles illegal forensics, once found illegal vehicles, you can capture forensics, easy to follow up processing.

Panorama: KMDA-3602 comes with 4-8 POE network ports, and can be connected with up to 8 cameras, which can realize multi-directional capture.

Mobile: high expansion capability of communication interface, wireless 4G/LTE and GPS communication support, can achieve wireless communication.



Police vehicle/police motorcycle mobile patrol monitoring system



Intelligent Parking System

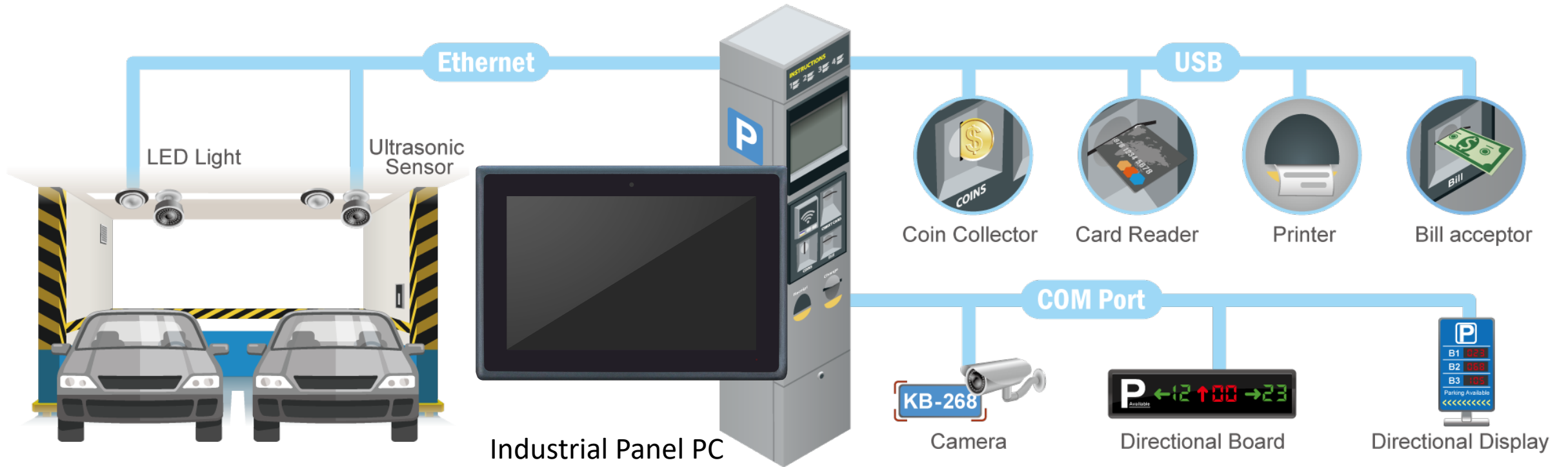


Main Features

- Compact size, ideal solution for payment kiosk.
- DIO for barrier control.
- Economy cost and flexible installation.

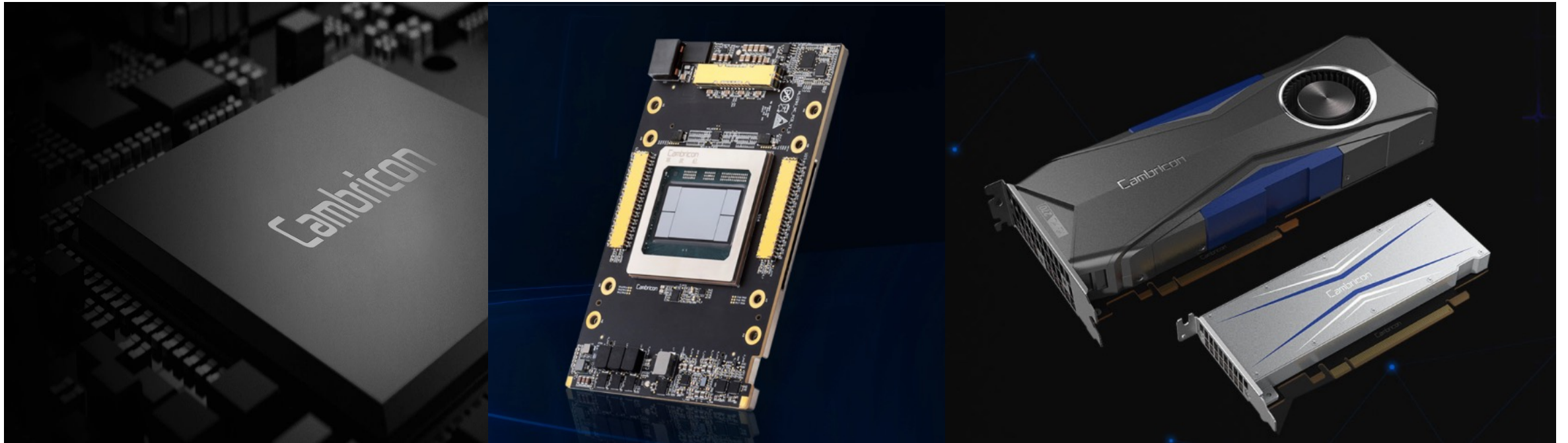


Application Scenarios



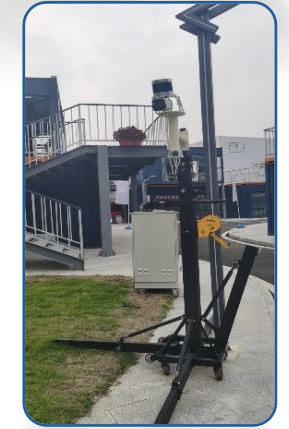
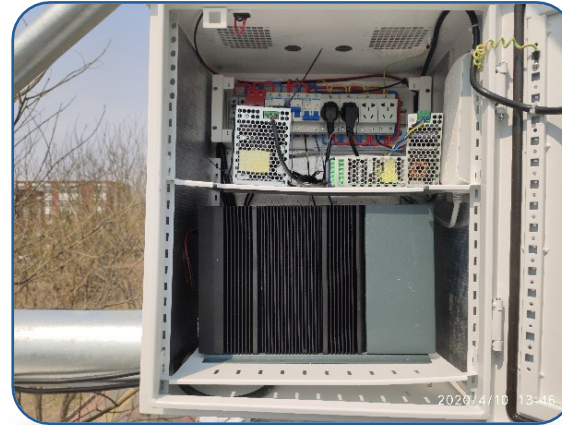
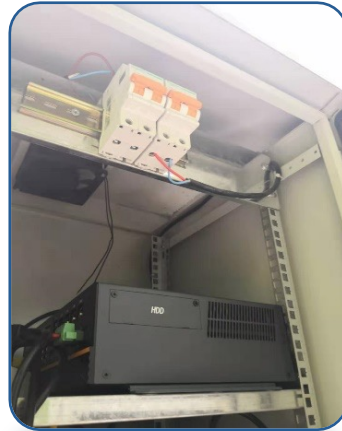
JHC AIoT R&D

Cambricon (www.cambricon.com)



Application Example

Traffic Monitoring and Toll Collecting



Major Applications



**Vehicle
monitoring
and
diagnosis
system**



DMI



PIS



CCTV



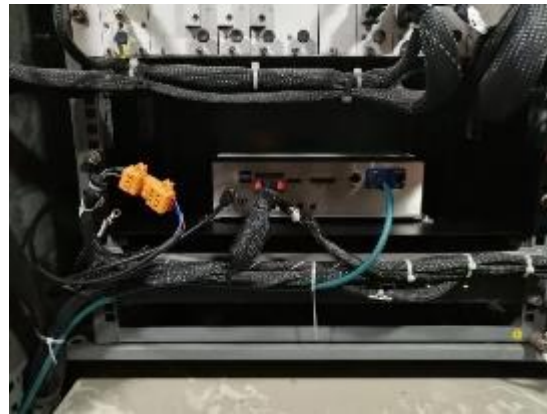
**Freight train
intelligent
identification
system**



SIGM-2650

Harbin Metro Line 1 PIS System

The Harbin Metro PIS passenger information system project uses JHCTECH SIGM-2650/S002 products as the main control of the play control system.



LCD TV

Camera



Intelligent Vehicle

Detectors of Passenger Analytics

Датчики и контроллеры автоматизированной системы мониторинга пассажиропотока

ADs Monitors

Outside Information Panel

Oil consumption

Датчик уровня топлива ТД-500 «Эскорт»/ Omnicomm LLS 20160

Система видеонаблюдения:

- Видеорегистратор EMV-400/800/1200
- Видеокамеры MBK-0933:
 - переднего вида;
 - наблюдения за водителем
 - салонные (от 4 до 12 в зависимости от вида ТС)
 - заднего вида

Video Surveillance 4-12ch

Датчик задымления и повышения температуры ИПК-ТУ 212-114A3-10281

Gas/Fire Detectors

Video Surveillance Microphon

Микрофон системы видеонаблюдения

Alarm Button

Тревожная кнопка

Бортовой навигационно-связной терминал Гранит-навигатор-2.07

Бортовая навигационно-связная УКВ-радиостанция ТАКТ-201.23 П45

Radio Communication

3G-модем Telit 863-3GE

3G modem Industrial

Internal
Data Sensors

External Data
Sensors

Communication

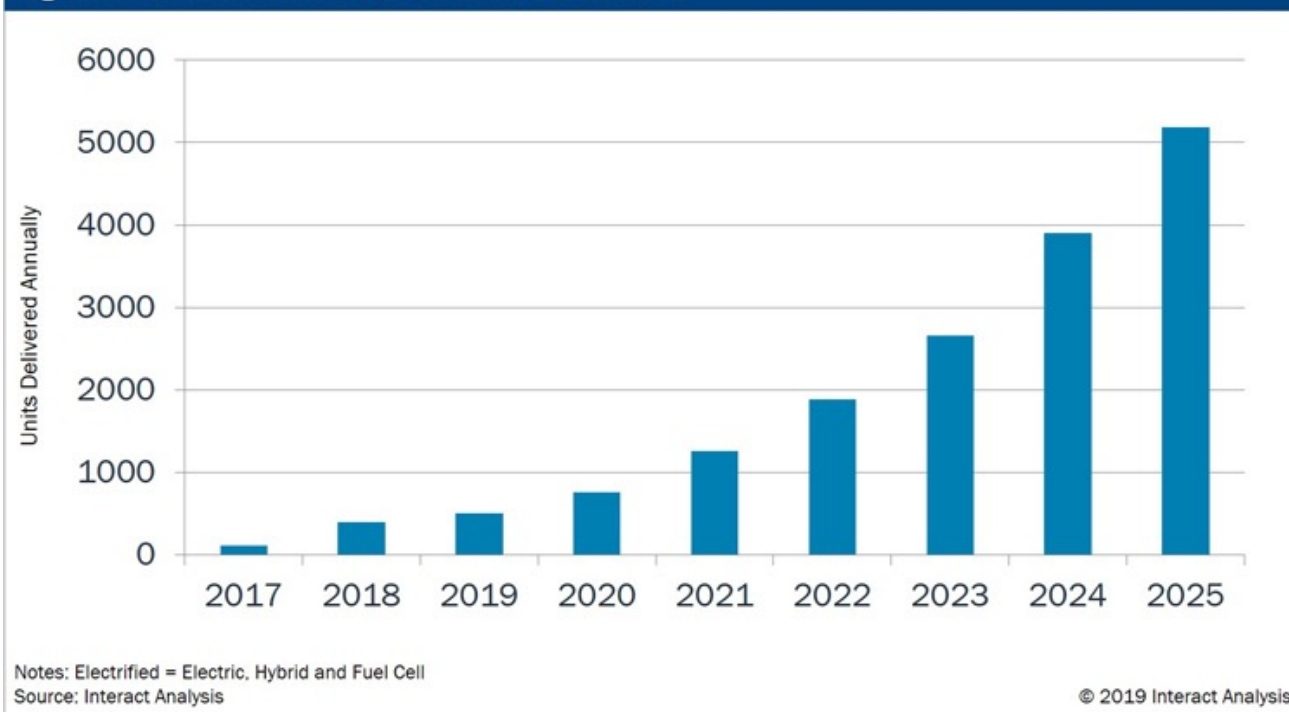
Data collection
& Processing

Data
Visualisation

JHCTECH

V2X = V2G - V2V - V2I - V2N - V2D

Figure 1: Latin America Electrified Bus Market



1. Financial support

The Zero-Emission Bus Rapid Deployment Accelerator (ZEBRA) will help to promote growth. An arm of C40 cities, ZEBRA is working with a number of municipalities in Latin America including Mexico City, Medellín and São Paulo to secure \$1 billion for the transition to zero emission buses.

2. Partnering with utilities

3. New business models

Using an OPEX-based operating model whereby the buses are leased on a per kilometre basis eliminates the up-front cost associated with electric buses. This operating model is common place in India which has seen significant growth in its electric bus market over the past 12 months. Alternatively, battery leasing schemes can be used which are often provided in North America and Europe.

Q & A

Dígame, Te ayudamos

Stay in Touch



JHC Technology Development Co.,Ltd.



@ShenzhenJHCTECH



@JHC_Technology



@JHCTECH



CONTACTS

Marketing

marketing@jhctech.com

Product Management

xiongju@jhctech.com.cn

